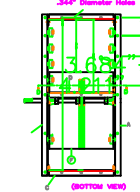
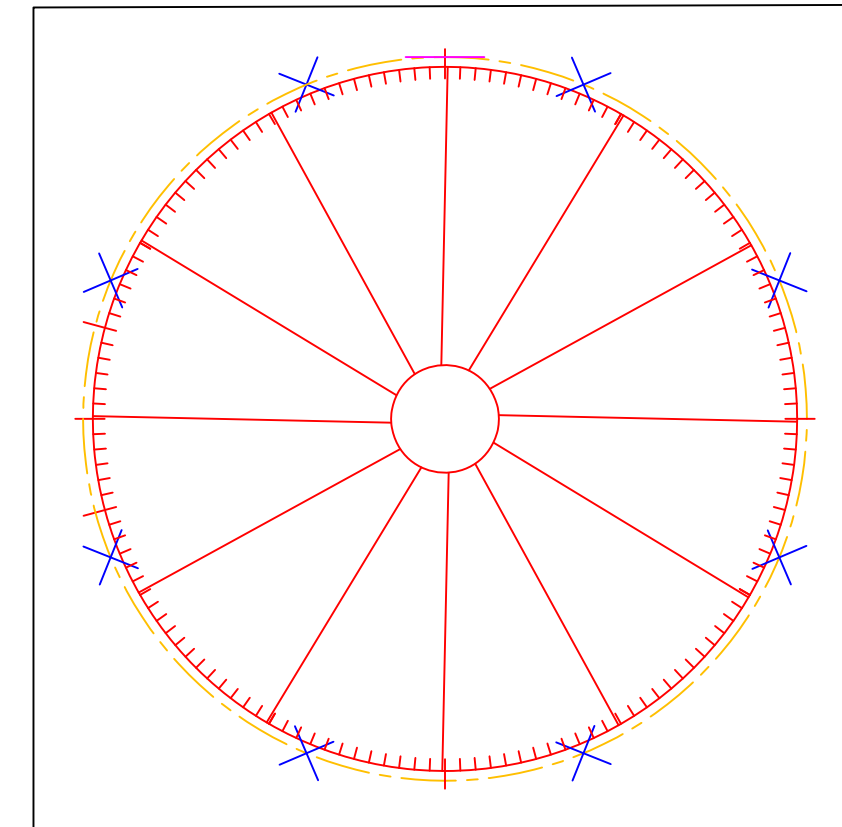


Hillside IL | www.tceconveyors.com |
844-220-0086
PLASTIC RESIN REGRIND STORAGE HOPPER SILO

TANK DISCHARGE VALVE DETAIL

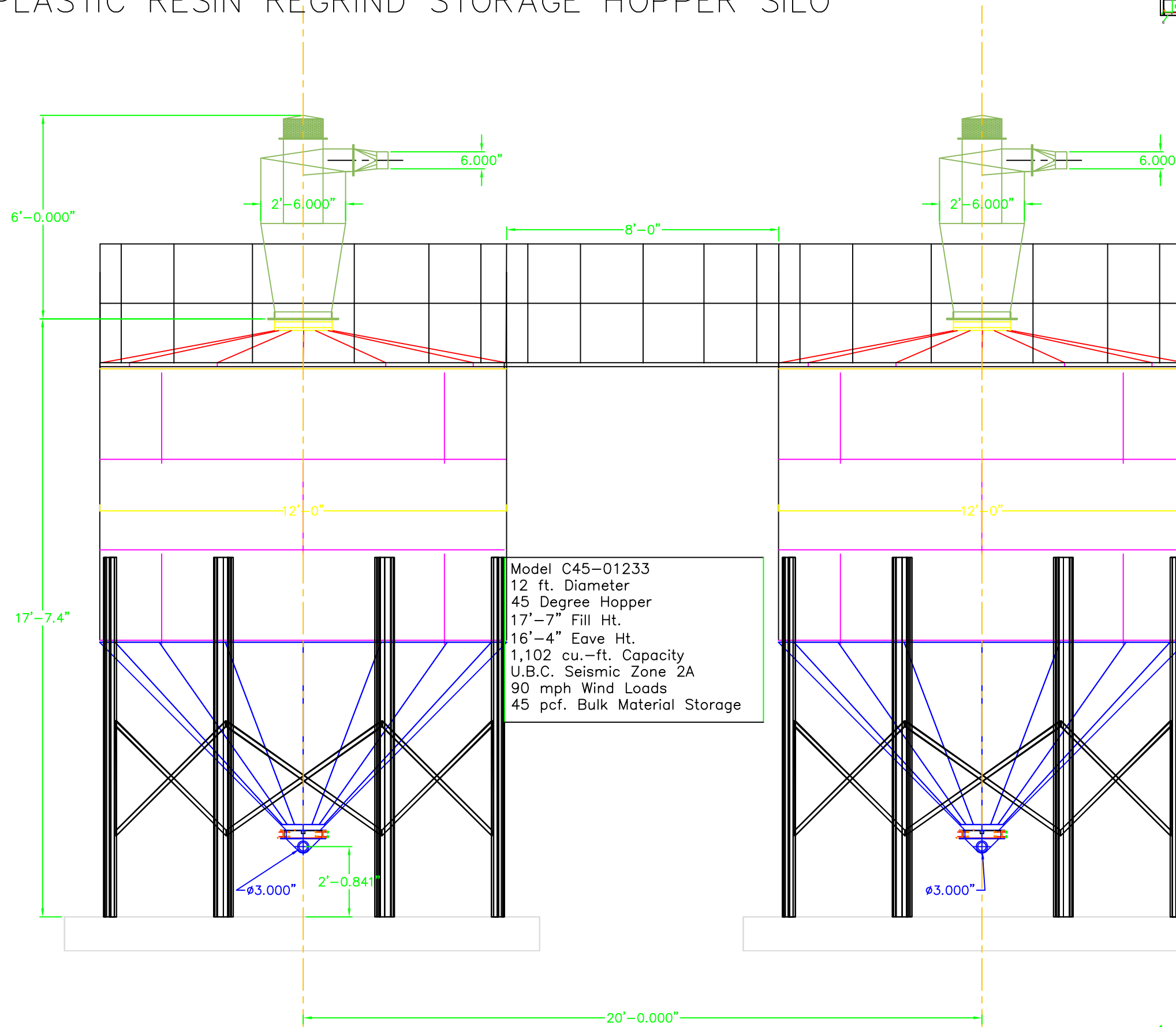
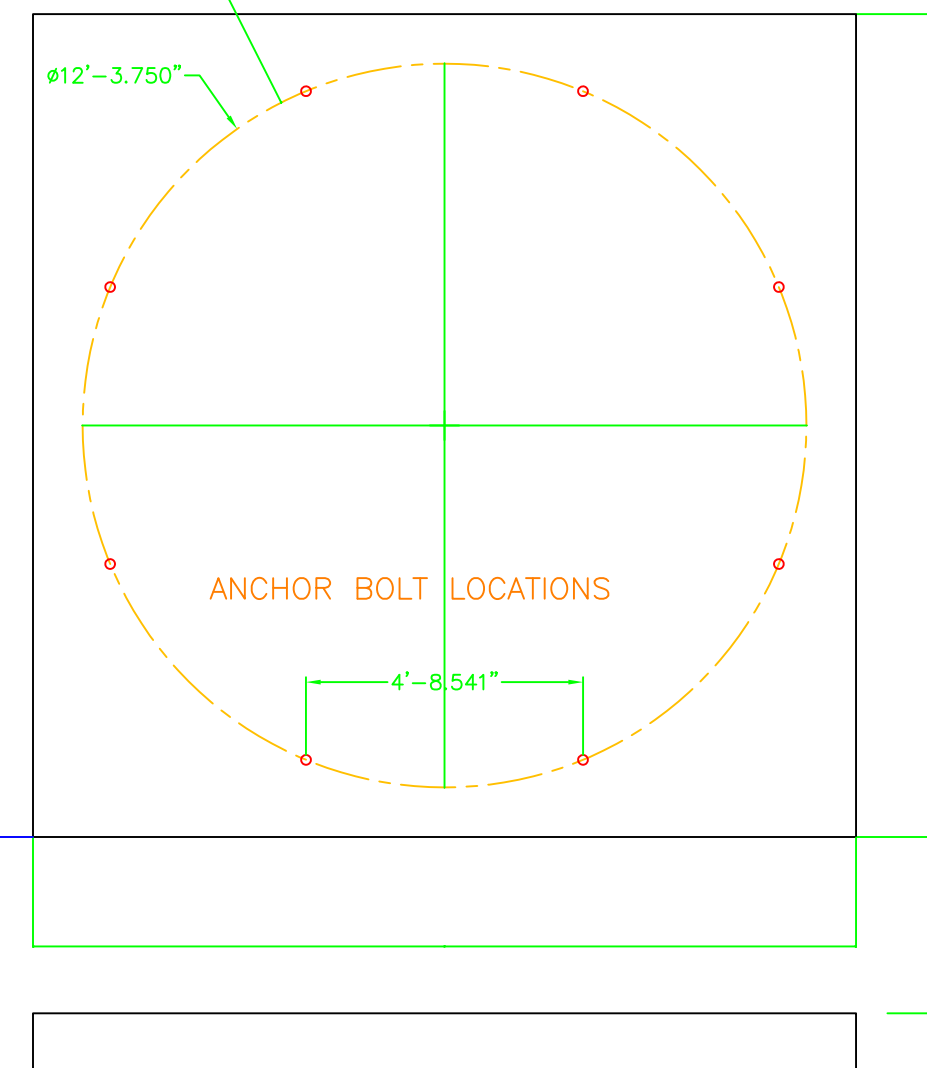


TOP VIEW



FOUNDATION DETAILS
For Model C45-01233

- Concrete Volume 7 cu.-yds. 3000 psi minimum compressive strength at 28 days.
- Concrete Reinforcing Steel shall have a minimum compressive strength of 33,000 psi.
- Foundation shall be appropriately designed for local soil and frost depth conditions. Sizes given are adequate for resisting 1.5 times the overturning due to a 90 mph wind acting on 0.6 times the area of the bin and seismic zone 2A.
- Foundation shall be smooth and level to within 1/4".
- Foundation shall be placed on soils with 3000 psf minimum bearing capacity.



TANK ELEVATION VIEW

Model C45-01233
12 ft. Diameter
45 Degree Hopper
17'-7" Fill Ht.
16'-4" Eave Ht.
1,102 cu.-ft. Capacity
U.B.C. Seismic Zone 2A
90 mph Wind Loads
45 pcf. Bulk Material Storage

1/2" $\phi 5/8" \times 8" \times 2"$ "L" Bolt
6 x 6 -W1.4 x 1.4 WWF
should be placed at one-half of the concrete depth.

1' Thick