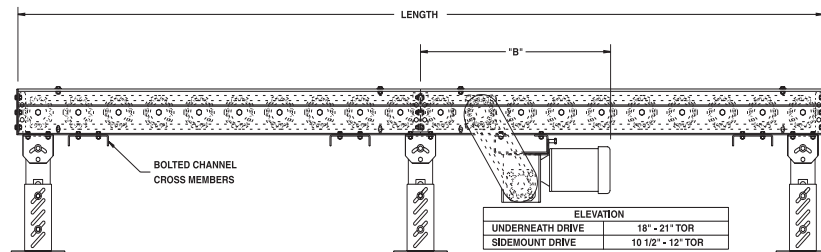
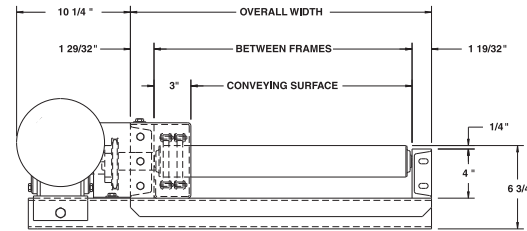
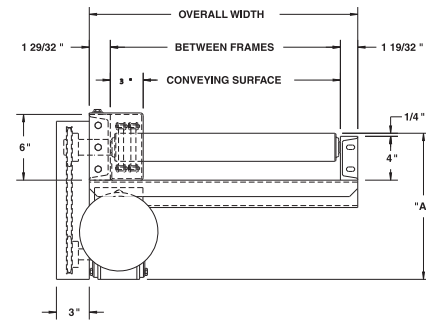


MODEL 297CDLR HEAVY DUTY CHAIN DRIVEN LIVE ROLLER



Conveyor shown with optional supports

Model 297CDLR is specifically designed to transport heavy loads such as tote pans, castings, drums, pallet loads, etc. It is especially suited for carrying loads in the presence of oil and other such contaminants. This chain driven live roller includes 7 gauge tread rollers and structural steel frame as standard unit features.



HP @ 35FPM	"A" MAX	"B" MAX
3/4	13"	38-13/16"
1	13-1/4"	39-1/8"
1-1/2	14-1/8"	39-1/8"
2	15"	40-13/16"

SPECIFICATIONS

TREAD ROLLERS: 2-9/16" dia. x 7 ga. steel rollers, model 297S with sprockets.

CHAIN DRIVE: Roller to roller with No. 60 roller chain.

CENTER DRIVE: Reversible drive either side mounted or underside mounted (specify). Main drive roller is supported by precision, heavy duty, lubricated, ball bearing units.

ROLLER CENTERS: 3", 4-1/2", 6", 9" and 12".

BED: 4" at 5.4 lbs. and 6" at 8.2 lbs. structural steel channel frame. Bed sections attached with couplings and floor supports.

SPEED: 35 FPM, constant.

BEARINGS: Precision ABEC bearings.

CHAIN GUARD: The chain drive is completely enclosed along the entire length of the conveyor.

BED LENGTHS (4-1/2" or 9" RC): Intermediate bed section lengths 3'-0", 3'-9", 4'-6", 5'-3", 6'-0", 6'-9", 7'-6", 8'-3", 9'-0" and 9'-9" increments. Minimum overall conveyor length with drive 5'-3". Maximum overall conveyor length: 58'-6" with 4-1/2" RC; 78'-0" with 9" RC.

BED LENGTHS (6" or 12" RC): Intermediate bed section lengths are available in 1'-0" increments. Minimum overall conveyor length with drive 5'-0". Maximum overall conveyor length 80'-0".

MOTOR DRIVE: 3/4 HP, 230/460/3, 60 cycle, ODP right angle gear motor.

ELECTRICAL CONTROLS: Optional.

*NOTE 3" RC: 3" RC are available with #40 chain on 40-14 double single sprocket sleeves.



OPTIONAL 3" RC NOW AVAILABLE (guard removed for clarity)

SPECIFICATION TABLE

■ 4 week shipment

UNIT WEIGHTS (FOR 4-1/2" AND 9" ROLLER CENTERS ONLY)																	
CONVEYOR LENGTH	5'-3"		9'-9"		19'-6"		29'-3"		39'		48'-9"		58'-6"		68'-3"		78'
CONV. SURFACE	BF	4-1/2" RC	9" RC	4-1/2" RC	9" RC	4-1/2" RC	9" RC	4-1/2" RC	9" RC	4-1/2" RC	9" RC	4-1/2" RC	9" RC	4-1/2" RC	9" RC	9" RC	9" RC
12"	15"	389	299	629	494	1142	876	1635	1257	2093	1639	2603	2020	3102	2402	2783	3300
18"	21"	414	333	709	553	1297	987	1872	1420	2401	1854	2989	2287	3564	2721	3154	3588
24"	27"	454	354	789	609	1452	1093	2100	1577	2696	2061	3359	3287	4007	3029	3513	3997
30"	33"	492	388	857	653	1583	1177	2292	1700	2945	2224	3671	2747	4380	3271	3794	4318
36"	39"	536	418	936	708	1736	1282	2517	1855	3237	2430	4037	3002	4818	3576	4149	4723
42"	45"	573	446	1013	761	1885	1384	2736	2006	3520	2630	4392	3251	5243	3874	4496	5119
48"	51"	620	479	1090	814	2034	1481	2955	2147	3805	2814	4749	3480	5670	4147	4813	5480
51"	54"	640	491	1130	841	2109	1532	3065	2223	3948	2914	4927	3605	5883	4296	4987	5678
54"	57"	662	507	1167	867	2183	1583	3174	2298	4090	3014	5105	3729	6096	4445	5160	5876
60"	63"	701	537	1246	922	2336	1688	3399	2453	4380	3219	5470	3984	6532	4750	5530	6281

UNIT WEIGHTS (FOR 6" AND 12" ROLLER CENTERS ONLY)																			
CONVEYOR LENGTH	5'		10'		20'		30'		40'		50'		60'		70'		80'		
CONV. SURFACE	BF	6" RC	12" RC	6" RC	12" RC	6" RC	12" RC	6" RC	12" RC	6" RC	12" RC	6" RC	12" RC	6" RC	12" RC	6" RC	12" RC	12" RC	
12"	15"	333	278	549	439	982	769	1415	1099	1848	1429	2281	1759	2714	2039	3147	2419	3850	2749
18"	21"	370	315	618	488	1115	859	1612	1228	2109	1598	2606	1968	3103	2338	3600	2708	4097	3078
24"	27"	405	350	684	534	1242	944	1800	1354	2358	1764	2916	2174	3474	2584	4032	2994	4590	3404
30"	33"	435	380	738	568	1345	1008	1952	1448	2559	1888	3166	2328	3773	2768	4380	3208	4987	3648
36"	39"	470	415	803	613	1470	1093	2137	1573	2804	2053	3471	2533	4138	3013	4805	3493	5472	3973
42"	45"	504	449	866	656	1591	1176	2316	1696	3041	2216	3766	2736	4491	3256	5216	3776	5941	4296
48"	51"	538	483	929	699	1712	1249	2495	1799	3278	2349	4061	2899	4844	3449	5627	3999	6410	4549
51"	54"	554	499	961	721	1773	1291	2585	1861	3397	2431	4209	3001	5021	3571	5833	4141	6645	4711
54"	57"	572	517	992	742	1833	1332	2674	1922	3516	2512	4356	3102	5197	3692	6038	4282	6879	4872
60"	63"	607	552	1057	787	1958	1417	2859	2047	3760	2677	4661	3307	5562	3937	6463	4567	7364	5197

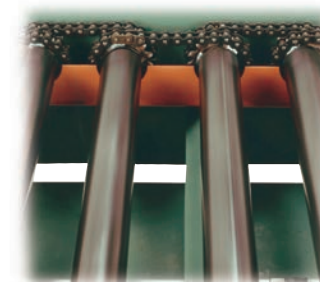
OPTIONAL EQUIPMENT

SPEED: Constant speed 1.5-100 FPM; DC variable speed; AC inverter variable speed. Other constant or variable speeds available. NOTE: CAPACITY CHANGES WITH SPEED. 100 FPM MAX. WITH ROLL-TO-ROLL CHAIN DRIVE.

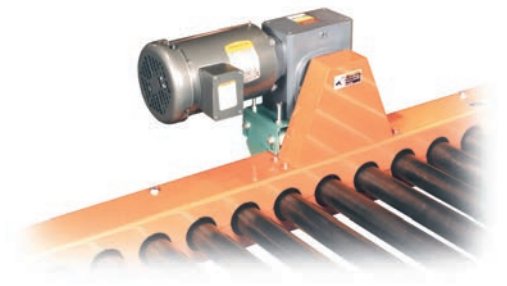
MOTORS: Available through 3 HP in TEFC, explosion proof, dirty duty, brake motor, 115/230/1, 575/3, etc.

FLOOR SUPPORTS: Supports, knee braces, casters and polyier supports available. See Conveyor Accessories.

ELECTRICAL CONTROLS: Magnetic starter (one direction or reversible); one direction manual starter; momentary start/stop push button station; forward/reversing/stop push button station; mounting and pre-wiring for units 12'-0" long and under; limit switch, photo relay; others available.



ROLLER TO ROLLER CHAIN DRIVE (guard removed for clarity)



OPTIONAL TOP ROLLER GUARD MOUNTED DRIVE