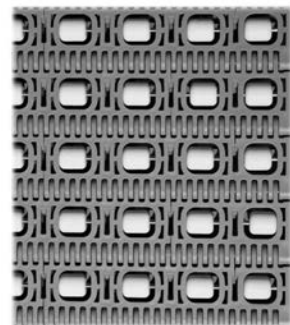


MODEL 700RT SERIES 400 INLINE ROLLER TOP PLASTIC BELT CONVEYOR



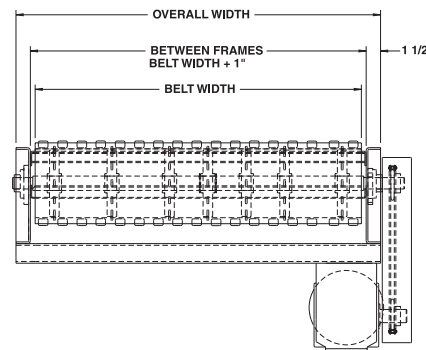
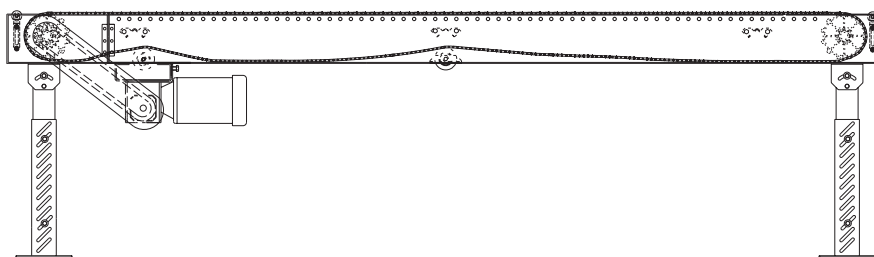
Flush edges with easy length adjustment, furnished standard

Conveyor shown with optional supports



BELT FLOW

Ideal for applications requiring transportation and temporary accumulation. Product accumulates with low back pressure using standard inline rollers in belt for various assembly line operations. Belt tracking problems are eliminated with model 700RT.



SPECIFICATIONS

BELTING: Series 400 roller top gray polypropylene belt, FDA approved belt.

DRIVE SPROCKETS: 7.8" pitch dia. with 1.5" square bore. Available with OPTIONAL 10.1" pitch dia. sprockets with 1.5" or 2.5" square bore.

TAIL SPROCKETS: 7.8" pitch dia. with 1.5" square bore. Available with OPTIONAL 10.1" pitch dia. sprockets with 1.5" or 2.5" square bore.

END DRIVE: Allows one-direction (unit) operation.

TAKE-UP: Catenary type located at discharge end.

RETURN ROLLERS: 1.9" dia. x 16 ga. steel, model 196S, adjustable with rubber sleeves.

BELT SPEED: 60 FPM, constant.

BEARINGS: Drive shaft bearings are precision, heavy duty, lubricated, ball bearing units with cast iron housings.

BED: 7" x 1-1/2" x 10 ga. channel frame with open style bed construction and UHMW wearstrips mounted to longitudinal channels.

FLOOR SUPPORTS: See Conveyor Accessories.

MOTOR DRIVE: 1/3 HP, 230/460/3, 60 cycle, ODP right angle gear motor.

ROLLER CHAIN: Drive shaft is driven by No. 50 roller chain for 1-1/2 HP or less and No. 60 chain on larger drives. Chain take-up provided on motor base.

ELECTRICAL CONTROLS: Optional.

⚠ WARNING

Prevent pinch points that exist when belt conveyors are permanently attached to other conveyors or equipment!

■ 3 week shipment