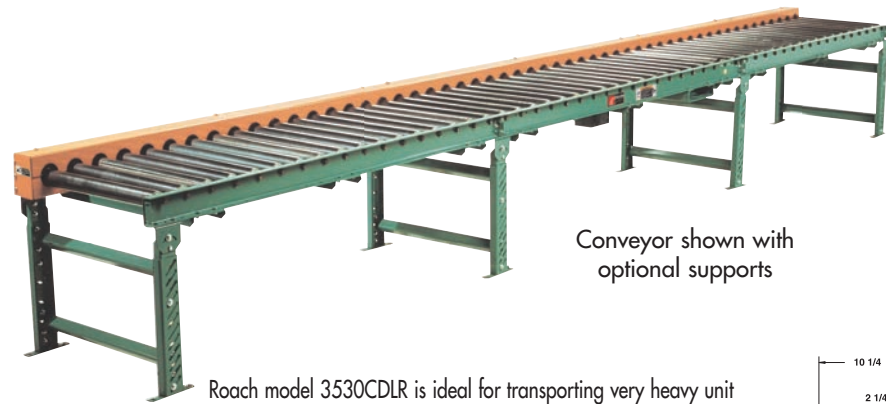
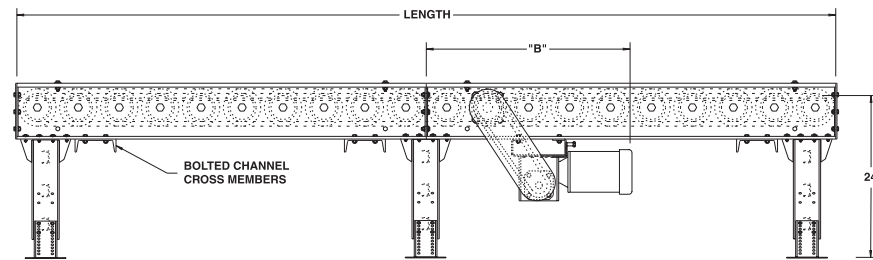
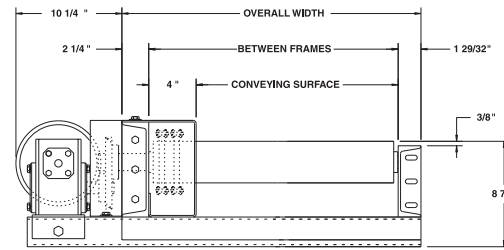
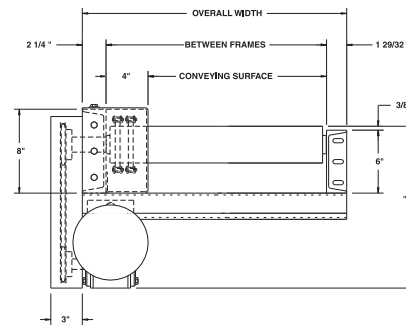


MODEL 3530CDLR HEAVY DUTY CHAIN DRIVEN LIVE ROLLER



Conveyor shown with optional supports

Roach model 3530CDLR is ideal for transporting very heavy unit loads. This heavy duty chain driven live roller is designed with heavy .300 wall steel rollers, larger size roller chain and heavy duty structural frame and supports for applications demanding ultra-durable construction for longevity and durability.



HP @ 35FPM	"A"	"B" MAX
3/4	16"	38-13/16"
1	16-1/4"	39-1/8"
1-1/2	17-1/8"	39-1/8"
2, 3	18-1/2"	40-13/16"
2	18-1/2"	41-13/16"

SPECIFICATIONS

TREAD ROLLERS: 3-1/2" dia. x .300 wall steel, model 3530S with sprockets.

CHAIN GUARD: The chain drive is completely enclosed along the entire length of the conveyor.

CENTER DRIVE: Reversible drive either side mounted or underneath mounted (specify). Main drive roller is supported by precision, heavy duty, lubricated, ball bearing units.

BEARINGS: Precision ABEC bearings.

BED LENGTHS (6" RC, #60 CHAIN AND 12" RC, #80 CHAIN): Intermediate bed section lengths 3'-0", 4'-0", 5'-0", 6'-0", 7'-0", 8'-0", 9'-0" and 10'-0" increments. Minimum overall conveyor length with drive 5'-0". Maximum overall conveyor length 80'-0".

BED LENGTHS (7-1/2" RC, #80 CHAIN): Intermediate bed section lengths 3'-1-1/2", 3'-9", 4'-4-1/2", 5'-0", 5'-7-1/2", 6'-3", 6'-10-1/2", 7'-6", 8'-1-1/2", 8'-9", 9'-4-1/2" and 10'-0". Minimum overall conveyor length with drive 5'-0". Maximum overall conveyor length 80'-0".

ROLLER CENTERS: 6" with No. 60 chain; 7-1/2" and 12" with No. 80 chain.

CHAIN DRIVE: Roller to roller with No. 60 or No. 80 roller chain.

SPEED: 35 FPM constant.

BED: 6" at 8.2 lbs. and 8" at 11.5 lbs. structural steel frame. Bed sections attached with couplings and floor supports.

MOTOR DRIVE: 3/4 HP, 230/460/3, 60 cycle, ODP right angle gear motor.

ROLLER CAPACITY: 2500 lbs. per roller.

ELECTRICAL CONTROLS: Optional.

SPECIFICATION TABLE

■ 4 week shipment

CONVEYOR LENGTH				10'	20'	30'	40'	50'	60'	70'	80'
CONV. SURFACE	BF	RC	CHAIN SIZE	UNIT WEIGHTS (lbs.)							
35"	39"	6"	60	1453	2873	4293	5713	7133	8553	9973	11393
		7-1/2"	80	1337	2950	4563	6176	7789	9402	11015	12628
		12"	80	990	1950	2910	3870	4830	5790	6750	7710
41"	45"	6"	60	1605	3179	4753	6327	7901	9475	11049	12623
		7-1/2"	80	1472	3165	4858	6551	8244	9937	11630	13323
		12"	80	1074	2104	3134	4164	5194	6224	7254	8284
47"	51"	6"	60	1757	3485	5213	6941	8669	10397	12125	13853
		7-1/2"	80	1607	3380	5153	6926	8699	10472	12245	14018
		12"	80	1159	2269	3379	4489	5599	6709	7819	8929
53"	57"	6"	60	1909	3791	5673	7555	9437	11319	13201	15083
		7-1/2"	80	1743	3596	5449	7302	9155	11008	12861	14714
		12"	80	1243	2423	3603	4783	5963	7143	8323	9503

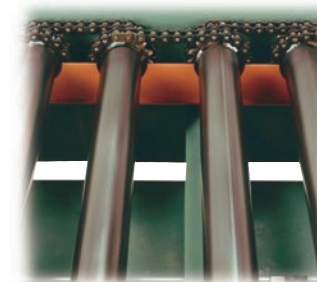
OPTIONAL EQUIPMENT

SPEED: Constant speed 1.5-100 FPM; DC variable speed; AC inverter variable speed. Other constant or variable speeds available. NOTE: CAPACITY CHANGES WITH SPEED. 100 FPM MAX. WITH ROLL-TO-ROLL CHAIN DRIVE.

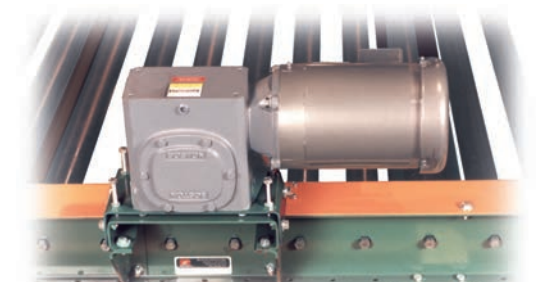
FLOOR SUPPORTS: Supports and knee braces available. See Conveyor Accessories.

ELECTRICAL CONTROLS: Magnetic starter (one direction or reversible); one direction manual starter; momentary start/stop push button station; forward/reversing/stop push button station; mounting and pre-wiring for units 12'-0" long and under; limit switch, photo relay; others available.

MOTORS: Available through 5 HP in TEFC, explosion proof, dirty duty, brake motor, 115/230/1, 575/3, etc.



ROLLER TO ROLLER CHAIN DRIVE
(guard removed for clarity)



OPTIONAL TOP ROLLER GUARD MOUNTED DRIVE