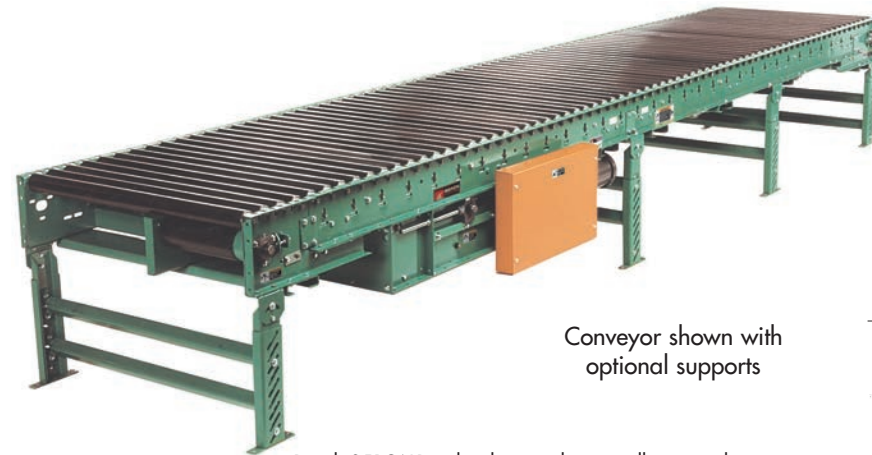


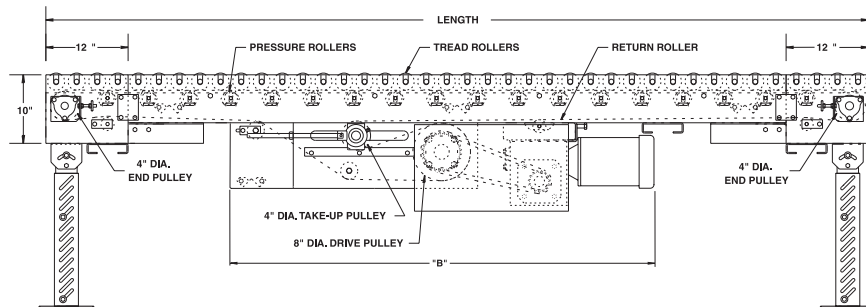
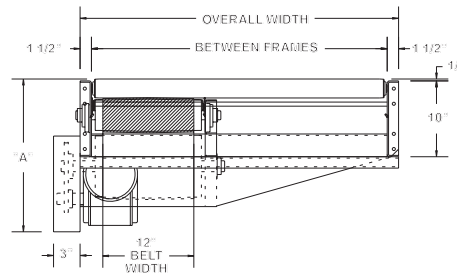
MODEL 251CALR HEAVY DUTY CAM ADJUSTED LIVE ROLLER

24 HOUR SHIPMENTS INCLUDE ALL 1-FOOT INCREMENTS 6'-0" TO 100'-0"



Conveyor shown with optional supports

Roach 251CALR is the choice to horizontally convey heavier unit loads where transfers, side loading or unloading is required. Its standard center drive allows for reversible operation.



HP@ 35 FPM	"A" MAX	"B" MAX
1	17-5/8"	59-17/32"
1-1/2	18-1/8"	61-21/32"
2	19"	62-21/32"

NOTE: Chart applies for 8" dia. drive pulley only.

SPECIFICATIONS

TREAD ROLLERS: 2-1/2" dia. x 11 ga. steel, model 251S.

PRESSURE ROLLERS: 1.9" dia. x 16 ga. steel, model 196S; same BF as conveyor up to 39" BF; units 43" BF and above, rollers are 21" BF with STANDARD 12" wide belt; 27" BF if OPTIONAL 24" belt is used.

BELTING: 12" wide PVC-120.

RETURN ROLLERS: 1.9" dia. x 16 ga. steel, model 196S, adjustable.

CENTER DRIVE: Reversible drive with 24" integral belt take-up. Specify location. For units under 8'-0" overall length, drive components must be stacked.

END PULLEY: 4" dia. with 1-3/16" dia. shaft on 15"-39" BF; 6" dia. with 1-7/16" dia. shaft above 39" BF; both crowned.

DRIVE PULLEY: 8" dia. with 1-7/16" dia. shaft on 15"-39" BF; 12" dia. with 1-15/16" dia. shaft above 39" BF; both crowned and fully lagged.

BEARINGS: Precision ABEC bearings.

BED: 7" x 1-1/2" x 10 ga. formed steel channel frame slotted for tread rollers to pop-out. When unit is installed at 7'-0" elevation or higher, rollers must be retained in conveyor frame. Specify desired elevation. Bed sections attached with couplings and floor supports.

MOTOR DRIVE: 1 HP, 230/460/3, 60 cycle, ODP right angle gear motor.

SPEED: 35 FPM, constant.

ROLLER CHAIN: Drive pulley is driven by No. 50 chain for 1-1/2 HP or less and No. 60 chain on larger drives. Chain take-up provided on motor base.

ELECTRICAL CONTROLS: Optional.

WARNING

Pop-out rollers should be retained in frame if unit is elevated to 7'-0" and above.

SPECIFICATION TABLE

■ 24 hour shipment ■ 3 week shipment

CONVEYOR LENGTH			10'	20'	30'	40'	50'	60'	70'	80'	90'	100'	Deduct
BF	OAW	BELT	UNIT WEIGHTS (lbs.) with 3" Roller Centers (For other centers, deduct weights below)										Per Foot
15"	18"	12'	852	1336	1821	2305	2790	3274	3759	4243	4728	5212	48
21"	24"	12'	1052	1645	2239	2832	3425	4019	4612	5206	5799	6392	59
27"	30"	12'	1252	1954	2657	3359	4061	4763	5466	6168	6870	7573	70
33"	36"	12'	1452	2263	3074	3886	4697	5508	6319	7130	7942	8753	81
39"	42"	12'	1652	2572	3492	4412	5333	6253	7173	8093	9013	9933	92
43"	46"	12'	1852	2881	3910	4939	5968	6997	8026	9055	10084	11113	103
51"	54"	12'	2052	3190	4328	5466	6604	7742	8880	10018	11156	12294	114
57"	60"	12"	2252	3499	4746	5993	7240	8486	9733	10980	12227	13474	125

Deduct the following weights (lbs.) for other than 3" centers

Tread Roller Centers	15" BF	21" BF	27" BF	33" BF	39" BF	45" BF	51" BF	57" BF
	Per 10'	Per 10'	Per 10'	Per 10'	Per 10'	Per 10'	Per 10'	Per 10'
4-1/2"	-108	-136	-174	-208	-240	-272	-304	-336
6"	-178	-228	-292	-348	-402	-456	-510	-564
9"	-240	-308	-394	-470	-544	-618	-692	-766
12"	-266	-342	-438	-522	-602	-682	-762	-842

OPTIONAL EQUIPMENT

END DRIVE: Mounted underneath conveyor. Minimum possible height is 20" TOR for underneath mounted end drive. Belt take-up required for end drive (if substituting end drive for center drive).

SIDE MOUNTED END DRIVE: Provides overall conveyor height of 14-1/4". Specify elevation required on order.

AUXILIARY TAKE-UP: Provides 24" of belt take-up. Specify location. See Power Accessories.

GUARD RAILS: Formed steel fixed model HFSG in 2", 4" and 6" heights; 1-1/2" angle model HGA1-1/2). See Convey Accessories.

CEILING HANGERS: 5/8" dia. thr rod with hardware to attach rods to conveyor. Provides 6' clearance to ceiling and TOR (furnished in place floor supports). Consult factory.

BELTING: 12" wide black PVC-150; 24" wide PVC-120.

FLOOR SUPPORTS: Supports, knee braces, casters and polytier supports available. See Conveyor Accessories.

SPEED: Constant speed 8-120 FPM (12" dia. drive pulley); DC variable speed; AC inverter variable speed. Other constant or variable speeds available. NOTE: CAPACITY CHANGES WITH SPEED.

MOTORS: Available through 3 HP in TEFC, explosion proof, dirty duty, brake motor, 115/230/1, 575/3, etc.

ELECTRICAL CONTROLS: Magnetic starter (one direction or reversible); One direction manual starter; Momentary start/stop push button station; Forward/reversing/stop push button station. Mounting and pre-wiring for units up to 12' long.



CALR CAM AND SERIAL PLATE