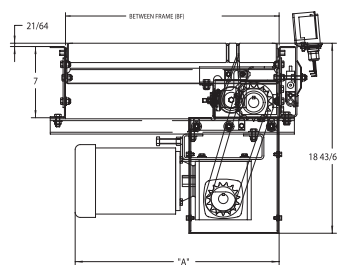


# MODEL SZ796LSZ W/PHOTOEYE CONTROLLED SMART ZONE® LINE SHAFT ZERO PRESSURE ACCUMULATOR

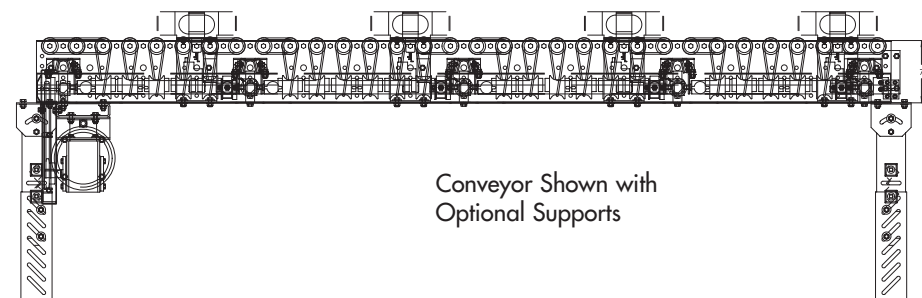


Conveyor shown with optional supports

SZ796LSZ SMART ZONE® quietly accumulates a wide variety of product sizes and features NO minimum weight limitations. SMART ZONE® eliminates sensor rollers and replaces with photo electric sensors to accumulate products with previously difficult minimal weight restrictions. This zero pressure line shaft driven accumulator is ideal for numerous light to medium duty applications since curves, spurs and other modules may be driven by a single drive.



**SMART ZONE:**  
Retroreflective photo eyes include a 24V DC power supply operated by a 110V AC input.



Conveyor Shown with Optional Supports

| HP@ 60 FPM | "A" MAX |
|------------|---------|
| 1/3, 1/2   | 21"     |
| 3/4, 1     | 22"     |
| 1-1/2, 2   | 23"     |

## SPECIFICATIONS

**TREAD ROLLERS:** 1.9" dia. x 16 ga. steel, model 196S grooved.

**DRIVE BELT:** 3/16" dia., polyurethane belts. Nominal 15 lbs. per roller drive.

**DRIVE SHAFT:** 1" dia. C1018 cold rolled steel shaft.

**COUPLINGS:** Couplings located both ends (type "A"), one end only (type "B" or "C") or none (type "D"). See 'line shaft coupling chart' opposite page, and specify.

**CENTER DRIVE:** Located approximately 16-1/2" from end of bed section on 4" RC; 18" on 3" and 6" RC.

**SPEED:** 60 FPM, constant.

**ACCUMULATION:** Zone singulation operation; 2'-0" zone length; zones are pneumatically actuated using photo electric sensors.

**BEARINGS:** All bearings are precision, lubricated, ball bearing units with composite housings.

**BED:** 7" x 1-1/2" x 12 ga. formed steel channel frame. Bed sections attached with splice plates and floor supports.

**FRL:** Unit is provided with filter, regulator, lubricator with 1/4" ports.

**PNEUMATIC ACTUATION:** Maximum air line pressure should not exceed 30 PSI.

**MOTOR DRIVE:** 1/3 HP, 230/460/3, 60 cycle, ODP right angle gear motor.

**ROLLER CHAIN:** Drive shaft is driven by No. 50 chain. Chain take-up provided on motor base.

**CAPACITY:** See technical section for load capacity rating.

## SPECIFICATION TABLE

■ 3 week shipment

| CONVEYOR LENGTH |     | 10'  | 20'  | 30'  | 40'  | 50'  | 60'  | 70'  | 80'  | 90'  | 100' | Deduct   |
|-----------------|-----|--|------|------|------|------|------|------|------|------|------|----------|
| BF              | OAW | UNIT WEIGHTS (lbs.) with 3" Roller Centers (For other centers, deduct weights below) |      |      |      |      |      |      |      |      |      | Per Foot |
| 15"             | 18" | 551  | 928  | 1306 | 1683 | 2061 | 2438 | 2816 | 3193 | 3571 | 3948 | 38       |
| 19"             | 21" | 589  | 1003 | 1417 | 1831 | 2244 | 2658 | 3072 | 3486 | 3900 | 4313 | 41       |
| 21"             | 24" | 612  | 1049 | 1486 | 1923 | 2360 | 2797 | 3234 | 3671 | 4108 | 4545 | 44       |
| 25"             | 28" | 646  | 1130 | 1613 | 2096 | 2580 | 3063 | 3546 | 4029 | 4513 | 4996 | 48       |
| 27"             | 30" | 672  | 1178 | 1684 | 2191 | 2697 | 3203 | 3710 | 4216 | 4722 | 5229 | 51       |
| 33"             | 36" | 724  | 1300 | 1876 | 2452 | 3027 | 3603 | 4179 | 4755 | 5331 | 5906 | 58       |
| 39"             | 42" | 788  | 1504 | 2079 | 2724 | 3369 | 4015 | 4660 | 5305 | 5950 | 6595 | 72       |

Deduct the following weights (lbs.) for other than 3" centers

| Tread Roller Centers | 15" BF |         | 19" BF |         | 21" BF |         | 25" BF |         | 27" BF |         | 33" BF |         | 39" BF |         |
|----------------------|--------|---------|--------|---------|--------|---------|--------|---------|--------|---------|--------|---------|--------|---------|
|                      | Per 5' | Per 10' | Per 5' | Per 10' | Per 5' | Per 10' | Per 5' | Per 10' | Per 5' | Per 10' | Per 5' | Per 10' | Per 5' | Per 10' |
| 4"                   | -14    | -28     | -17    | -34     | -19    | -37     | -21    | -42     | -23    | -45     | -27    | -53     | -31    | -62     |
| 6"                   | -18    | -36     | -34    | -68     | -37    | -74     | -42    | -84     | -45    | -90     | -53    | -106    | -62    | -124    |

## OPTIONAL EQUIPMENT

**SIDE MOUNTED DRIVE:** Provides overall conveyor height of 10".

**ACCUMULATION ZONES:** 18" and 30" long zones available, depending on roller centers.

**FLOOR SUPPORTS:** Supports, knee braces, casters and polytier supports available. See Conveyor Accessories.

**CEILING HANGERS:** 5/8" dia. threaded rod with hardware to attach rods to ceiling and TOR (furnished in place of floor supports). See Conveyor Accessories.

**CONVEYOR SPEED:** Constant speed 15-120 FPM; DC variable speed; AC inverter variable speed. MINIMUM operating speed for line shaft conveyor is 30 FPM.

**SLUG RELEASE:** Products may be slug released rather than individual product release in normal zone singulation; accumulation mode will not be disturbed when slug release option utilized.

**GALVANIZED ROLLERS:** Tread rollers available in galvanized steel, model 196G grooved.

**MOTORS:** Available through 2 HP in TEFC, explosion proof, dirty duty, 115/230/1, 575/3, etc.

**DEFUSED SMARTZONE:** Photoeyes mounted below tread rollers.

### LINE SHAFT COUPLING CHART

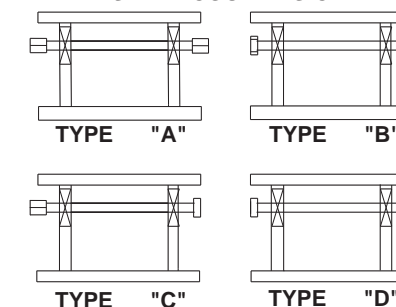


PHOTO SENSOR MOUNT



LINE SHAFT BEARING HOUSING