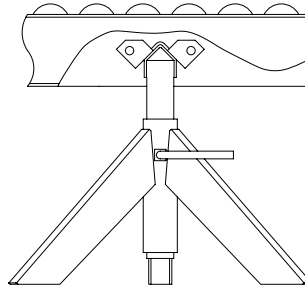


**SUPPORTS**  
**LIGHT DUTY TRIPOD SUPPORTS**



**TRIPOD**  
400 lbs. capacity

Tripod supports are the choice for fast set-up or temporary installations. Easily adjustable, tripods are designed for wheel conveyors and 138 gravity series roller conveyors. Tripods are simply placed underneath conveyor section crossbrace as shown in detail at right.



**SPECIFY MODEL NUMBER FOR TRIPODS**  
**T-18-40**

T-(overall width\*)-(elevation code)

\*Specify 12", 18" or 24" overall width only. Tripods are suited specifically for wheel conveyors and 138 gravity series conveyors ONLY.

**SPECIFICATIONS**

**CONSTRUCTION:** Top channel of tripod is 1-9/16" x 15/16" x 12 ga. welded to 1" inside diameter pipe. Tripod base is 12 ga. construction.

ELEVATION CODE	HEIGHT ADJUSTMENT MIN. (TOP OF TRIPOD)	HEIGHT ADJUSTMENT MAX. (TOP OF TRIPOD)	12" OAW WT. (lbs.)	18" OAW WT. (lbs.)	24" OAW WT. (lbs.)
18	9-1/4"	15-1/4"	8	9	10
30	15-1/4"	27-1/4"	11	12	13
40	21-1/4"	37-1/4"	13	14	15
52	27-1/4"	49-1/4"	15	16	17
72	37-1/4"	69-1/4"	18	19	20
110	57-1/4"	107-1/4"	25	26	27

■ 24 hour shipment

**SINGLE LEG SUPPORTS**

ELEVATION CODE	MODEL SLL/SLM HEIGHT ADJUSTMENT MIN. (TOP OF LEG)	MODEL SLL/SLM HEIGHT ADJUSTMENT MAX. (TOP OF LEG)	MODEL SLH HEIGHT ADJUSTMENT MIN. (TOP OF LEG)	MODEL SLH HEIGHT ADJUSTMENT MAX. (TOP OF LEG)
1	7-1/4"	10-1/4"	6-1/4"	7-3/4"
2	10-1/4"	13-1/4"	7-3/4"	10-3/4"
3	13-1/4"	16-1/4"	10-3/4"	13-3/4"
4	16-1/4"	22-1/4"	13-3/4"	16-3/4"
5	20-1/4"	26-1/4"	16-3/4"	19-3/4"
6	24-1/4"	36-1/4"	19-3/4"	25-3/4"
7	34-1/4"	46-1/4"	25-3/4"	31-3/4"
8	46-1/4"	58-1/4"	31-3/4"	43-3/4"
9	58-1/4"	70-1/4"	43-3/4"	55-3/4"
10	70-1/4"	82-1/4"	55-3/4"	67-3/4"
11	80-1/4"	92-1/4"	67-3/4"	79-3/4"
12	90-1/4"	104-1/4"	79-3/4"	91-3/4"

**SINGLE LEG SUPPORTS MODEL NUMBER**  
**SLM-6**

SL (light, medium or heavy duty)-(elevation code)



■ 24 hour shipment

**SPECIFICATIONS**

**CONSTRUCTION:** SLL and SLM 12 ga. inside and outside channel assemblies with 10 ga. C-3 pivot plate. SLH 10 ga. inside and outside channel assemblies with 7 ga. C-3 pivot plate.

Single leg supports provide support where full "H-type" permanent supports are not normally required such as 90° curves with continuous side rails or where support cross-brace cannot be used.

