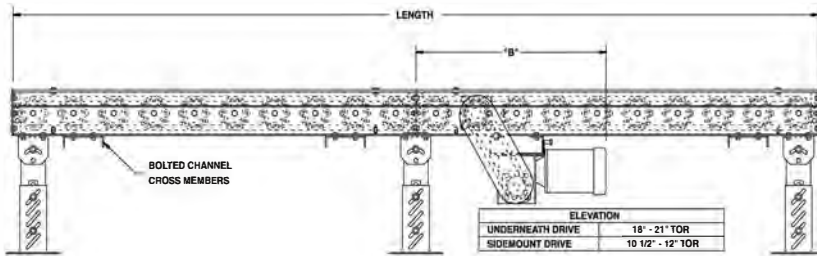
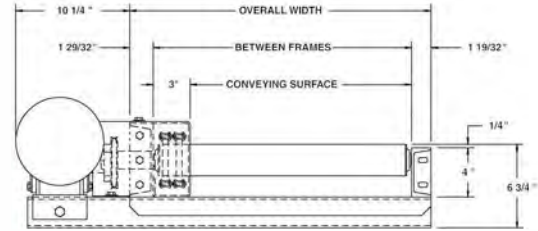
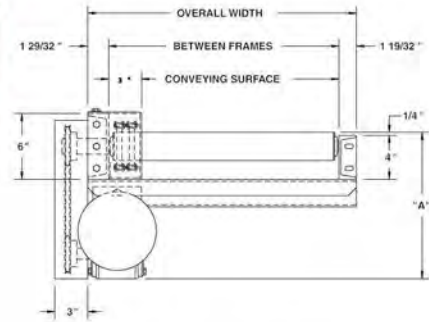


MODEL 297CDLR HEAVY DUTY CHAIN DRIVEN LIVE ROLLER



Conveyor shown with optional supports

Model 297CDLR is specifically designed to transport heavy loads such as tote pans, castings, drums, pallet loads, etc. It is especially suited for carrying loads in the presence of oil and other such contaminants. This chain driven live roller includes 7 gauge tread rollers and structural steel frame as standard unit features.



| HP @ 35FPM | "A" MAX | "B" MAX |
|------------|---------|-----------|
| 3/4 | 13" | 38-13/16" |
| 1 | 13-1/4" | 39-1/8" |
| 1-1/2 | 14-1/8" | 39-1/8" |
| 2 | 15" | 40-13/16" |

CHAIN DRIVEN LIVE ROLLERS

SPECIFICATIONS

TREAD ROLLERS: 2-9/16" dia. x 7 ga. steel rollers, model 297S with sprockets.

CHAIN DRIVE: Roller to roller with No. 60 roller chain.

CENTER DRIVE: Reversible drive either side mounted or underside mounted (specify). Main drive roller is supported by precision, heavy duty, lubricated, ball bearing units.

ROLLER CENTERS: 3", 4-1/2", 6", 9" and 12".

BED: 4" at 5.4 lbs. and 6" at 8.2 lbs. structural steel channel frame. Bed sections attached with couplings and floor supports.

SPEED: 35 FPM, constant.

BEARINGS: Precision ABEC bearings.

CHAIN GUARD: The chain drive is completely enclosed along the entire length of the conveyor.

BED LENGTHS (4-1/2" or 9" RC): Intermediate bed section lengths 3'-0", 3'-9", 4'-6", 5'-3", 6'-0", 6'-9", 7'-6", 8'-3", 9'-0" and 9'-9" increments. Minimum overall conveyor length with drive 5'-3". Maximum overall conveyor length: 58'-6" with 4-1/2" RC; 78'-0" with 9" RC.

BED LENGTHS (6" or 12" RC):

Intermediate bed section lengths are available in 1'-0" increments. Minimum overall conveyor length with drive 5'-0". Maximum overall conveyor length 80'-0".

MOTOR DRIVE: 3/4 HP, 230/460/3, 60 cycle, ODP right angle gear motor.

ELECTRICAL CONTROLS: Optional.

***NOTE 3" RC:** 3" RC are available with #40 chain on 40-14 double single sprocket sleeves.



OPTIONAL 3" RC NOW AVAILABLE (guard removed for clarity)

Roach Conveyors- Thomas Conveyor and Equipment
28 Hillside Avenue- Hillside- IL- 60162- www.tceconveyors.com

THOMAS CONVEYOR
and Equipment Company, Inc.
28 Hillside Avenue • Hillside, IL 60162-0736

SPECIFICATION TABLE

■ 4 week shipment

| UNIT WEIGHTS (FOR 4-1/2" AND 9" ROLLER CENTERS ONLY) | | | | | | | | | | | | | | | | | | |
|--|-----|-----------|-------|-----------|-------|-----------|-------|-----------|-------|-----------|-------|-----------|-------|-----------|-------|--------|-------|-----|
| CONVEYOR LENGTH | | 5'-3" | | 9'-9" | | 19'-6" | | 29'-3" | | 39' | | 48'-9" | | 58'-6" | | 68'-3" | | 78' |
| CONV. SURFACE | BF | 4-1/2" RC | 9" RC | 4-1/2" RC | 9" RC | 4-1/2" RC | 9" RC | 4-1/2" RC | 9" RC | 4-1/2" RC | 9" RC | 4-1/2" RC | 9" RC | 4-1/2" RC | 9" RC | 9" RC | 9" RC | |
| 12" | 15" | 389 | 299 | 629 | 494 | 1142 | 876 | 1635 | 1257 | 2093 | 1639 | 2603 | 2020 | 3102 | 2402 | 2783 | 3300 | |
| 18" | 21" | 414 | 333 | 709 | 553 | 1297 | 987 | 1872 | 1420 | 2401 | 1854 | 2989 | 2287 | 3564 | 2721 | 3154 | 3588 | |
| 24" | 27" | 454 | 354 | 789 | 609 | 1452 | 1093 | 2100 | 1577 | 2696 | 2061 | 3359 | 3287 | 4007 | 3029 | 3513 | 3997 | |
| 30" | 33" | 492 | 388 | 857 | 653 | 1583 | 1177 | 2292 | 1700 | 2945 | 2224 | 3671 | 2747 | 4380 | 3271 | 3794 | 4318 | |
| 36" | 39" | 536 | 418 | 936 | 708 | 1736 | 1282 | 2517 | 1855 | 3237 | 2430 | 4037 | 3002 | 4818 | 3576 | 4149 | 4723 | |
| 42" | 45" | 573 | 446 | 1013 | 761 | 1885 | 1384 | 2736 | 2006 | 3520 | 2630 | 4392 | 3251 | 5243 | 3874 | 4496 | 5119 | |
| 48" | 51" | 620 | 479 | 1090 | 814 | 2034 | 1481 | 2955 | 2147 | 3805 | 2814 | 4749 | 3480 | 5670 | 4147 | 4813 | 5480 | |
| 51" | 54" | 640 | 491 | 1130 | 841 | 2109 | 1532 | 3065 | 2223 | 3948 | 2914 | 4927 | 3605 | 5883 | 4296 | 4987 | 5678 | |
| 54" | 57" | 662 | 507 | 1167 | 867 | 2183 | 1583 | 3174 | 2298 | 4090 | 3014 | 5105 | 3729 | 6096 | 4445 | 5160 | 5876 | |
| 60" | 63" | 701 | 537 | 1246 | 922 | 2336 | 1688 | 3399 | 2453 | 4380 | 3219 | 5470 | 3984 | 6532 | 4750 | 5530 | 6281 | |

| UNIT WEIGHTS (FOR 6" AND 12" ROLLER CENTERS ONLY) | | | | | | | | | | | | | | | | | | | |
|---|-----|-------|--------|-------|--------|-------|--------|-------|--------|-------|--------|-------|--------|-------|--------|-------|--------|-------|--------|
| CONVEYOR LENGTH | | 5' | | 10' | | 20' | | 30' | | 40' | | 50' | | 60' | | 70' | | 80' | |
| CONV. SURFACE | BF | 6" RC | 12" RC | 6" RC | 12" RC | 6" RC | 12" RC | 6" RC | 12" RC | 6" RC | 12" RC | 6" RC | 12" RC | 6" RC | 12" RC | 6" RC | 12" RC | 6" RC | 12" RC |
| 12" | 15" | 333 | 278 | 549 | 439 | 982 | 769 | 1415 | 1099 | 1848 | 1429 | 2281 | 1759 | 2714 | 2039 | 3147 | 2419 | 3850 | 2749 |
| 18" | 21" | 370 | 315 | 618 | 488 | 1115 | 859 | 1612 | 1228 | 2109 | 1598 | 2606 | 1968 | 3103 | 2338 | 3600 | 2708 | 4097 | 3078 |
| 24" | 27" | 405 | 350 | 684 | 534 | 1242 | 944 | 1800 | 1354 | 2358 | 1764 | 2916 | 2174 | 3474 | 2584 | 4032 | 2994 | 4590 | 3404 |
| 30" | 33" | 435 | 380 | 738 | 568 | 1345 | 1008 | 1952 | 1448 | 2559 | 1888 | 3166 | 2328 | 3773 | 2768 | 4380 | 3208 | 4987 | 3648 |
| 36" | 39" | 470 | 415 | 803 | 613 | 1470 | 1093 | 2137 | 1573 | 2804 | 2053 | 3471 | 2533 | 4138 | 3013 | 4805 | 3493 | 5472 | 3973 |
| 42" | 45" | 504 | 449 | 866 | 656 | 1591 | 1176 | 2316 | 1696 | 3041 | 2216 | 3766 | 2736 | 4491 | 3256 | 5216 | 3776 | 5941 | 4296 |
| 48" | 51" | 538 | 483 | 929 | 699 | 1712 | 1249 | 2495 | 1799 | 3278 | 2349 | 4061 | 2899 | 4844 | 3449 | 5627 | 3999 | 6410 | 4549 |
| 51" | 54" | 554 | 499 | 961 | 721 | 1773 | 1291 | 2585 | 1861 | 3397 | 2431 | 4209 | 3001 | 5021 | 3571 | 5833 | 4141 | 6645 | 4711 |
| 54" | 57" | 572 | 517 | 992 | 742 | 1833 | 1332 | 2674 | 1922 | 3516 | 2512 | 4356 | 3102 | 5197 | 3692 | 6038 | 4282 | 6879 | 4872 |
| 60" | 63" | 607 | 552 | 1057 | 787 | 1958 | 1417 | 2859 | 2047 | 3760 | 2677 | 4661 | 3307 | 5562 | 3937 | 6463 | 4567 | 7364 | 5197 |

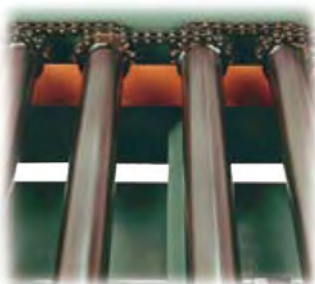
OPTIONAL EQUIPMENT

SPEED: Constant speed 1.5-100 FPM; DC variable speed; AC inverter variable speed. Other constant or variable speeds available. **NOTE: CAPACITY CHANGES WITH SPEED. 100 FPM MAX. WITH ROLL-TO-ROLL CHAIN DRIVE.**

MOTORS: Available through 3 HP in TEFC, explosion proof, dirty duty, brake motor, 115/230/1, 575/3, etc.

FLOOR SUPPORTS: Supports, knee braces, casters and polytier supports available. See Conveyor Accessories.

ELECTRICAL CONTROLS: Magnetic starter (one direction or reversible); one direction manual starter; momentary start/stop push button station; forward/reversing/stop push button station; mounting and pre-wiring for units 12'-0" long and under; limit switch, photo relay; others available.



ROLLER TO ROLLER CHAIN DRIVE
(guard removed for clarity)



OPTIONAL TOP ROLLER GUARD MOUNTED DRIVE