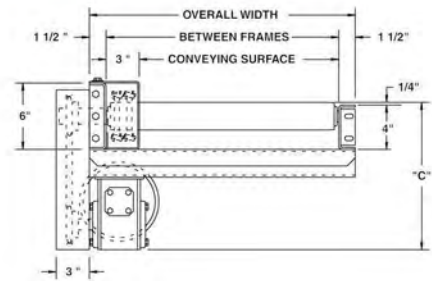


MODEL 251CDLRC HEAVY DUTY CHAIN DRIVEN LIVE ROLLER CURVE

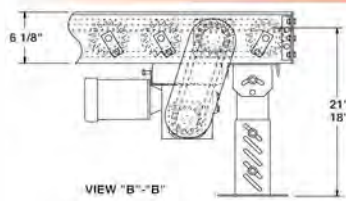


Conveyor shown with optional supports

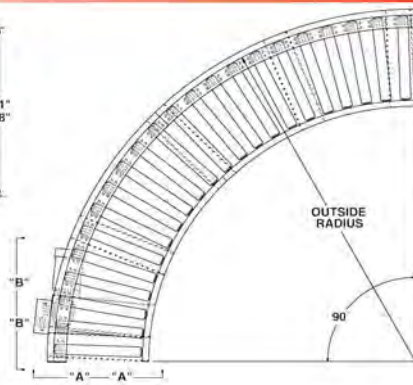
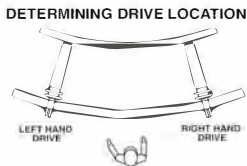
SPECIFY MODEL NUMBER PER EXAMPLE
251CDLRC-39-90-L
251CDLRC-(between frames)-(degree)-(left or right)



251CDLRC, heavy duty chain driven live roller curve, transports heavy unit loads. Heavy castings, drums and other loads not requiring product orientation may be effectively conveyed on this conveyor.



VIEW "B"- "B"



UNIT			90°		45°	
BF	CONV. SURFACE	OUTSIDE RADIUS	QTY. RLRs.	WT (lbs.)	QTY. RLRs.	WT (lbs.)
15"	12"	7'-1-1/2"	22	624	11	347
21"	18"	7'-1-1/2"	22	672	11	374
27"	24"	7'-1-1/2"	22	721	11	401
33"	30"	7'-1-1/2"	22	769	11	428
39"	36"	7'-1-1/2"	22	815	11	454
45"	42"	10'-3-3/4"	32	1244	16	672
51"	48"	10'-3-3/4"	32	1383	16	744
57"	54"	10'-3-3/4"	32	1531	16	827
63"	60"	10'-3-3/4"	32	1680	16	909

CHAIN DRIVEN LIVE ROLLERS

SPECIFICATIONS

TREAD ROLLERS: 2-1/2" dia. x 11 ga. steel, model 251S with sprockets.

CHAIN DRIVE: Roller to roller with No. 60 circular roller chain.

END DRIVE: Reversible drive either side mounted or underside (specify). Main drive roller is supported by precision, heavy duty, lubricated, ball bearing units.

BEARINGS: Precision ABEC bearings.

ROLLER CENTERS: 6" RC measured at outside radius of curve.

MOTOR DRIVE: 3/4 HP, 230/460/3, 60 cycle, ODP right angle gear motor.

SPEED: 35 FPM, constant.

BED: 6" x 1-1/2" x 7 ga. and 4" x 1-1/2" x 7 ga. formed steel channel frame.

CHAIN GUARD: The chain drive is enclosed, top and bottom, along the entire length of the conveyor.

DRIVE LOCATION: Drive located on outside of curve. Specify right hand drive or left hand drive (drive hand determined with reference point located at outside of curve).

ELECTRICAL CONTROLS: Optional.

HP @ 35FPM	"C"
3/4	13"
1	13-1/4"
1-1/2	14-1/8"
2	15"

OPTIONAL EQUIPMENT

BED: Rollers on 4-1/2" centers on outside radius.

SPEED: Constant speed 1.5-60 FPM; DC variable speed; AC inverter variable speed. Other constant or variable speeds available.

NOTE: CAPACITY CHANGES WITH SPEED. 100 FPM MAX. WITH ROLLER-TO-ROLLER CHAIN DRIVE.

MOTORS: Available through 3 HP in TEFC, explosion proof, dirty duty, 115/230/1, 575/3, etc.

FLOOR SUPPORTS: Supports, knee braces, casters, and polytief supports available. See Conveyor Accessories.

*NOTE: Orientation of product may be affected because of straight rollers in curve. To maintain orientation, use tapered roller curve.

Roach Conveyors-Thomas Conveyor and Equipment
28 Hillside Avenue- Hillside- IL- 60162- www.tceconveyors.com