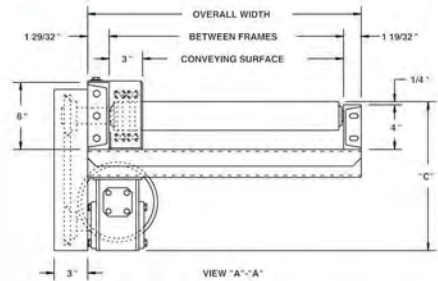


# MODEL 297CDLRC HEAVY DUTY CHAIN DRIVEN LIVE ROLLER CURVE

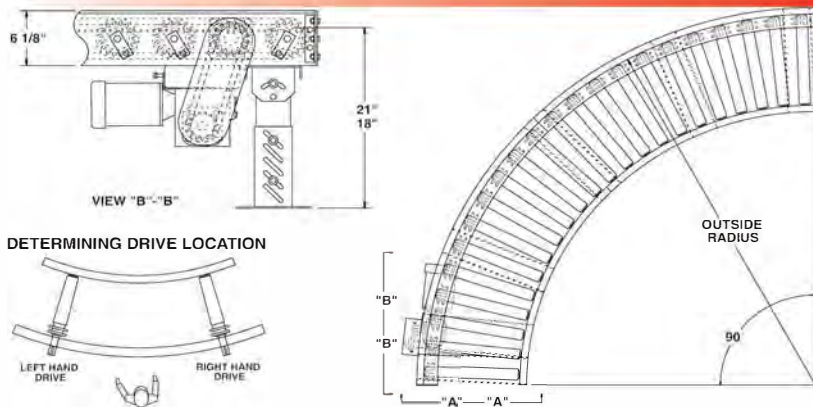


Conveyor shown with optional supports

**SPECIFY MODEL NUMBER PER EXAMPLE**  
**297CDLRC-57-45-R**  
 297CDLRC-(between frames)-(degree)-(left or right)



Model 297CDLRC features structural steel channel frames for conveying heavy unit loads. Heavy cast-ings, drums and numerous other loads not requiring product orientation may be transported on this heavy duty chain driven live roller curve.



UNIT		90°		45°		
BF	CONV. SURFACE	OUTSIDE RADIUS	QTY. RLRS.	WT (lbs.)	QTY. RLRS.	WT (lbs.)
15"	12"	7'-1-1/2"	22	736	11	421
21"	18"	7'-1-1/2"	22	846	11	495
27"	24"	7'-1-1/2"	22	956	11	540
33"	30"	7'-1-1/2"	22	1066	11	750
39"	36"	7'-1-1/2"	22	1176	11	811
45"	42"	10'-3-3/4"	32	1625	16	872
51"	48"	10'-3-3/4"	32	1735	16	965
57"	54"	10'-3-3/4"	32	1845	16	1026

## SPECIFICATIONS

**TREAD ROLLERS:** 2-9/16" dia. x 7 ga. steel, model 297S with sprockets.\*

**CHAIN DRIVE:** Roller to roller with No. 60 circular roller chain.

**END DRIVE:** Reversible drive, either side mounted or underside (specify). Main drive roller is supported by precision, heavy duty, lubricated, ball bearing units.

**CHAIN GUARD:** Chain drive is enclosed, top and bottom, along entire length of conveyor.

**ROLLER CENTERS:** 6" RC measured at outside radius of curve.

**BED:** 4" at 5.4 lbs. and 6" at 8.2 lbs. structural steel channel frame.

**BEARINGS:** Precision ABEC bearings.

**MOTOR DRIVE:** 3/4 HP, 230/460/3, 60 cycle, ODP right angle gear motor.

**SPEED:** 35 FPM, constant.

**DRIVE LOCATION:** Drive located on outside of curve. Specify right hand drive or left hand drive (drive hand determined with reference point located at outside of curve).

**ELECTRICAL CONTROLS:** Optional.

HP @ 35FPM	"C"
3/4	13"
1	13-1/4"
1-1/2	14-1/8"
2	15

## OPTIONAL EQUIPMENT

**BED:** Rollers on 4-1/2" centers on outside radius.

**SPEED:** Constant speed 1.5-60 FPM; DC variable speed; AC inverter variable speed. Other constant or variable speeds available.

**NOTE: CAPACITY CHANGES WITH SPEED. 100 FPM MAX. WITH ROLLER-TO-ROLLER CHAIN DRIVE.**

**MOTORS:** Available through 3 HP in TEFC, explosion proof, dirty duty, 115/230/1, 575/3, etc.

**FLOOR SUPPORTS:** Supports, knee braces, casters, and polytier supports available. See Conveyor Accessories.

\*NOTE: Orientation of product may be affected because of straight rollers in curve. To maintain orientation, use tapered roller curve.

