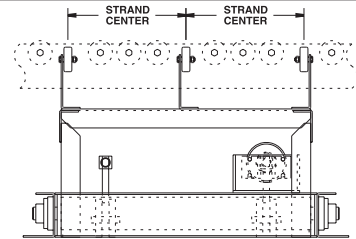
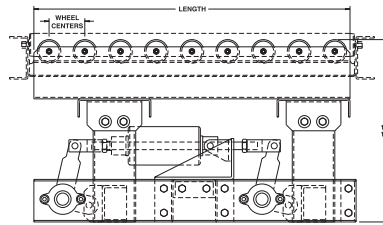


# MODEL WT 90° SKATE WHEEL TRANSFER



Shown mounted  
in optional  
conveyor



## SPECIFICATIONS

**TRANSFER ARM:** 7 ga. formed channel.

**TRANSFER WHEELS:** Frantz model 35Z on 3" wheel centers. Wheels are rated at 50 lbs. capacity each.

**STRANDS:** 2,3,4 or more.

**STANDARD LENGTHS:** 2', 3', 4', and 5'.

**STRAND CENTERS:** As required.

**LIFT:** Positive type lift with 1" of net lift.

**BEARINGS:** Heavy duty, lubricated, ball bearing unit with cast iron housings.

**MOUNTING:** Integral part of unit, with 15" top of wheel elevation (down position). Unit designed to mount between conveyor frames.

**ELECTRICAL CONTROLS:** Optional.

**CAPACITY:** Unit load not to exceed 500 lbs.

**AIR CONTROLS:** Air cylinder (double action) with single solenoid valve. (60-80 PSI required)

LENGTH	WT. (lbs.)	LENGTH	WT. (lbs.)
2'	375	4'	440
3'	395	5'	485

■ 4 week shipment


**Thomas  
Conveyor &  
Equipment Co.**

1S450 Summit Avenue, Suite 175, Oakbrook Terrace IL 60181  
844 220 0086 www.tceconveyors.com