

# MODEL 796LSS LINE SHAFT CONVERGING SPUR MODULE



Conveyor shown with optional supports

Line shaft converging spur modules, model 796LSS, allow product to flow from spur lines and merge onto straight line shaft driven conveyor. Spur modules are designed to be driven by 796LS, thus decreasing overall number of drives in the conveyor system.

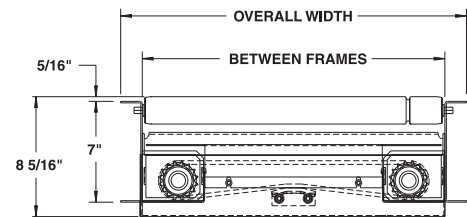
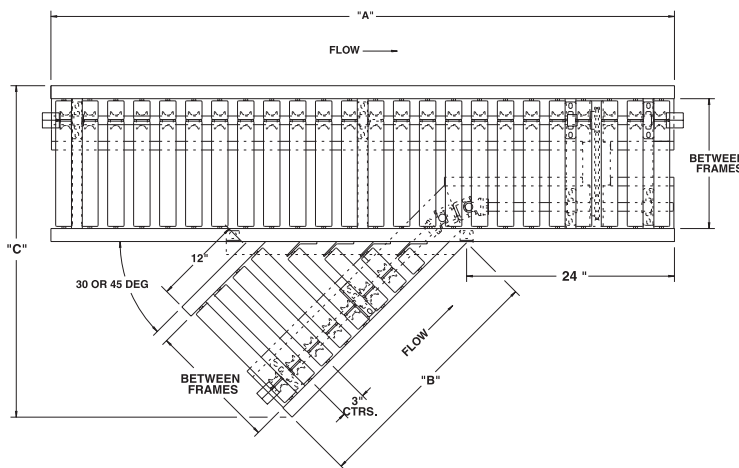
**SPECIFY MODEL NUMBER PER EXAMPLE**  
796LSS-45-21-R

796LSS (spur degree)-(between frames)-(left or right)

Available in 30° or 45°. Specify 796LSSO for spur module only less mainline module (similar to photo below).



Model 796LSSOX, spur only with powered crossover, shown above.



BF	15"	19"	21"	25"	27"	33"	39"
SPUR	UNIT WEIGHTS (lbs.)						
45°	212	268	296	351	379	463	546
30°	226	272	296	342	365	435	604

## SPECIFICATIONS

**TREAD ROLLERS:** 1.9" dia. x 16 ga. steel, model 196S grooved, 3" centers.

**DRIVE BELT:** 3/16" dia., polyurethane belts. Nominal 15 lbs. per roller drive.

**DRIVE SHAFT:** 1" dia. C1018 cold rolled steel shaft. NOTE: Spools in spur section only are keyed to provide positive drive (designed not to slip on drive shaft).

**COUPLINGS:** Couplings located both ends or one end only. Specify where couplings required.

**BED:** 7" x 1-1/2" x 12 ga. formed steel channel frame. Short side of spur is always 12" overall length.

**BEARINGS:** Precision, lubricated, ball bearing units with composite housings.

**MOTOR DRIVE:** Unit is designed to be driven by 796LS.

**ROLLER CHAIN:** Spur driven via crossover with No. 40 chain.

■ 4 week shipment

## OPTIONAL EQUIPMENT

**FLOOR SUPPORTS:** Supports, knee braces, casters, polytier supports & ceiling hangers available. See Conveyor Accessories.

**GUARD RAILS:** 1-3/4" x 1" formed channel (model GC), adjusts horizontally to 8" wider than roller and vertically to 6" above roller; formed steel fixed (model FSG in 2", 4" and 6" heights; fixed channel (model FC); 1-1/2" angle (model GA1-1/2). See Conveyor Accessories.

NOTE: Specify "right hand" or "left hand". To determine hand of spur, refer to Technical Section.

30° SPUR				45° SPUR		
BF	"A"	"B"	"C"	"A"	"B"	"C"
15"	6'	40-7/8"	38-3/8"	6'	28-5/8"	38-1/4"
19"	8'	47-3/4"	45-7/8"	8'	32-5/8"	45-1/8"
21"	8'	51-1/4"	49-5/8"	8'	34-5/8"	48-1/2"
25"	8'	58-1/8"	57-1/8"	8'	38-5/8"	55-3/8"
27"	8'	61-5/8"	60-3/4"	8'	40-5/8"	58-3/4"
33"	10'	72"	72"	10'	46-5/8"	69"
39"	10'	82-3/8"	83-1/4"	10'	52-5/8"	79-1/4"