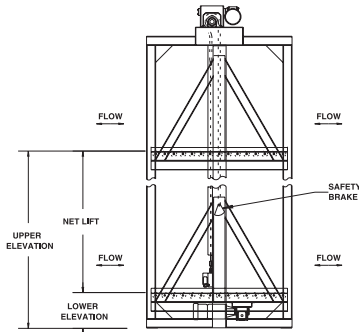


MODEL RVC / CVC VERTICAL CONVEYORS



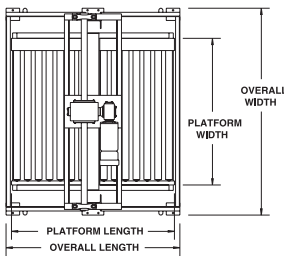
MODEL RVC
C-FLOW

RVC SIDE VIEW



Model RVC above shown with optional blue powder paint.

RVC TOP VIEW

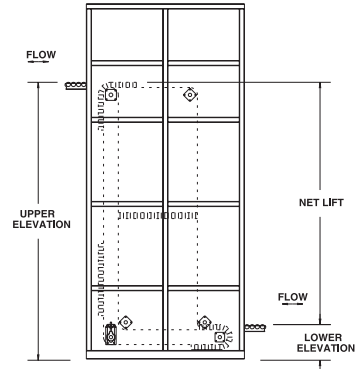


MODEL RVC
Z-FLOW

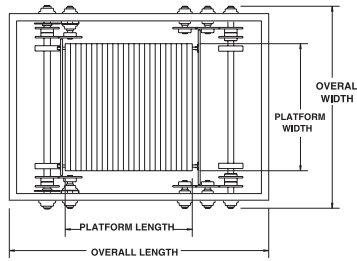


MODEL CVC
Z-FLOW

CVC-Z SIDE VIEW

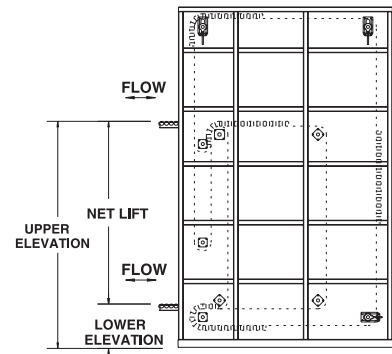


CVC TOP VIEW



MODEL CVC
C-FLOW

CVC-C SIDE VIEW



RVC SPECIFICATIONS

CAPACITY: Up to 3000 lbs.

FRAME: Heavy duty tubular construction.

DRIVE: (2) heavy strands of chain to raise and lower carrier platform.

RATE: Varies with unit height.

SPEED: 60 FPM (120 FPM maximum).

LOADING: One or more loading points may be selected at any level.

PLATFORM: Specify conveyor type.

GUARDS: Expanded metal guarding.

CONTROLS: Optional.

CVC SPECIFICATIONS

CAPACITY: Up to 3000 lbs.

FRAME: Heavy duty tubular construction.

DRIVE: (4) continuous roller chains driven by a suitably sized brake motor.

RATE: Up to 25 loads per minute.

SPEED: 60 FPM (100 FPM maximum).

LOADING: Automatic loading is accomplished by metering belt. Operator attention is not required.

PLATFORM: Size depends upon product.

GUARDS: Expanded metal guarding.

CONTROLS: Supplied as required.

CV. NO.	CARRIER PLATFORM DIMENSIONS		PLATFORM CAPACITY
	LENGTH	WIDTH	
60	3" INCR. UP TO 49'-1/2"	18"-60"	200
80	4" INCR. UP TO 78"	24"-84"	600
100	5" INCR. UP TO 90'-1/2"	30"-96"	1000
122	6" INCR. UP TO 105"	36"-96"	2000
143	8" INCR. UP TO 108"	36"-96"	3000

■ 8 week shipment

THOMAS CONVEYOR
and Equipment Company, Inc.

15450 Summit Ave • Suite 175 • Oakbrook Terrace, IL 60181
Phone (708) 449-2100 • Fax (708) 449-2106 • www.tceconveyors.com

