

MISC. ACCESSORIES

PNEUMATIC BRAKE ASSEMBLY



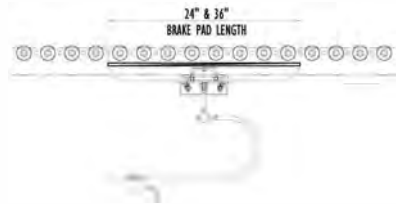
Model PBA pneumatic brake assembly is used to automatically brake rollers for flow control and also for indexing when combined with pneumatic stop. Model above for medium duty applications while model at right designed for heavy duty use. Both shown mounted in optional conveyor.

PNEUMATIC BRAKES MODEL NUMBER PBAM-24
 PBA{(medium or heavy duty*)}-(brake length)
 *Specify M for medium duty or H for heavy duty

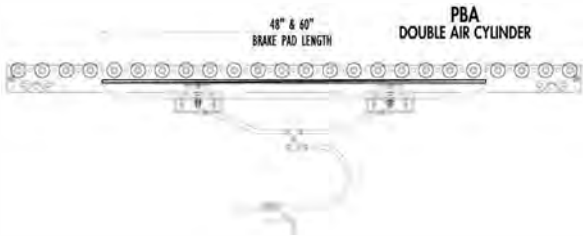
SPECIFICATIONS

- AIR CYLINDERS:** 1/2" stroke.
- SOLENOID VALVE:** Single, 110 volt.
- CONSTRUCTION:** 7 ga. formed with 5/16" pad.
- LENGTH:** 24", 36" and 48" (specify).
- OPTIONAL:** Double solenoid and electrical controls.

PBA SINGLE AIR CYLINDER



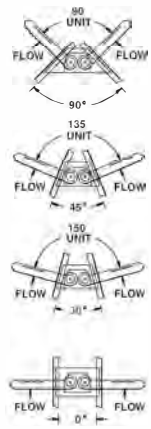
PBA DOUBLE AIR CYLINDER



TRAFFIC COP



Traffic cops control merges allowing first carton striking an arm to pass. This action automatically locks the other arm in place until the first carton clears the arm. Model TC shown attached to optional conveyor.

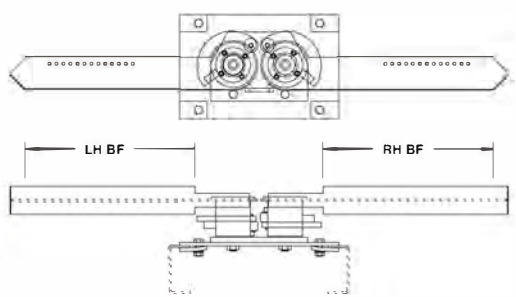


TRAFFIC COPS MODEL NUMBER TC-135-21-21
 TC-(degree of unit*)-(left hand between frames)-
 (right hand between frames)
 *Specify 90°, 135°, 150° or 180°.

SPECIFICATIONS

- CONSTRUCTION:** Arms constructed of 10 ga. HRS steel with 14 ga. face, welded for unit durability.
- UNIT ARC:** 90°, 135°, 150° and 180° available.
- TORQUE:** Minimum 5" - lb.; maximum per arm 2500" - lb.

Toll Free
844-220-0086



■ 3 week shipment

Roach Conveyors- Thomas Conveyor and Equipment
 28 Hillside Avenue- Hillside- IL- 60162- www.tceconveyors.com

CONVEYOR ACCESSORIES