

# MODEL B BALL TRANSFER UNITS

24 HOUR SHIPMENTS INCLUDE ALL 1-FOOT INCREMENTS 1'-0" TO 10'-0" ON BALL TRANSFERS

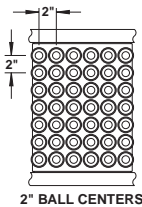
BALL TRANSFER MODEL NUMBER  
B-27-3-5  
B-(between frames)-(ball centers)-(length)



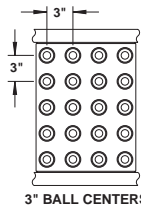
For replacement ball assemblies, refer to part #BRW04650

Optional: Use SM supports on page 138

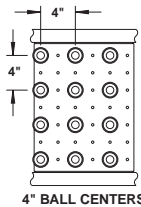
DETERMINE BALL SPACING by dividing minimum package dimension by 2.5. Center to center ball spacing results with minimum of 9 ball casters required to support each package.



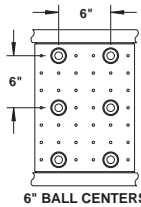
2" BALL CENTERS



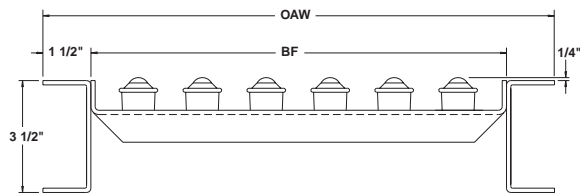
3" BALL CENTERS



4" BALL CENTERS



6" BALL CENTERS



## SPECIFICATIONS

**BALL ASSEMBLIES:** 1" dia. steel ball x 1-13/16" overall housing diameter. Mounting bolt is 1/4"-20.

**BALL CAPACITY:** 50 lbs. per ball with max. unit load not to exceed the capacity of 4 balls (200#).

**FRAMES:** 3-1/2" x 1-1/2" x 10 ga. steel with balls in set high position (1/4" above side frames) only.

**FRAME CAPACITY:** 1300 lbs. maximum distributed live load per 10' section with supports at 10' ctrs; 3200 lbs. at 5' ctrs.

**PLATES:** Balls are attached in square pattern to 10 ga. formed plates up to 39" BF. Above 39", plates are 7 ga.

**COUPLINGS:** Butt type.

BALL TRANSFERS								
BETWEEN FRAMES	2" CENTERS BALLS PER FT.	3" CENTERS BALLS PER FT.	4" CENTERS BALLS PER FT.	6" CENTERS BALLS PER FT.	2" CENTERS WT. PER FT. (lbs.)	3" CENTERS WT. PER FT. (lbs.)	4" CENTERS WT. PER FT. (lbs.)	6" CENTERS WT. PER FT. (lbs.)
13"	36	20	12	6	28	22	19	17
15"	42	20	12	6	32	23	20	18
17"	48	24	15	8	35	26	23	20
19"	54	28	15	8	38	28	24	21
21"	60	28	18	8	42	30	26	22
23"	66	32	18	10	45	32	27	24
25"	72	36	21	10	48	34	29	25
27"	78	36	21	10	52	36	30	26
31"	90	44	24	12	58	40	34	29
33"	96	44	27	12	62	42	36	30
37"	108	52	30	14	69	47	39	33
39"	114	52	30	14	72	49	40	34
43"	126	60	33	16	79	53	43	36
47"	138	64	36	18	85	57	47	40
51"	150	68	39	18	92	61	50	42

### WARNING

To prevent pinch points that exist when gravity conveyors are permanently attached to power conveyors, use connector brackets with safety pop-out rollers shown on pg. 100.