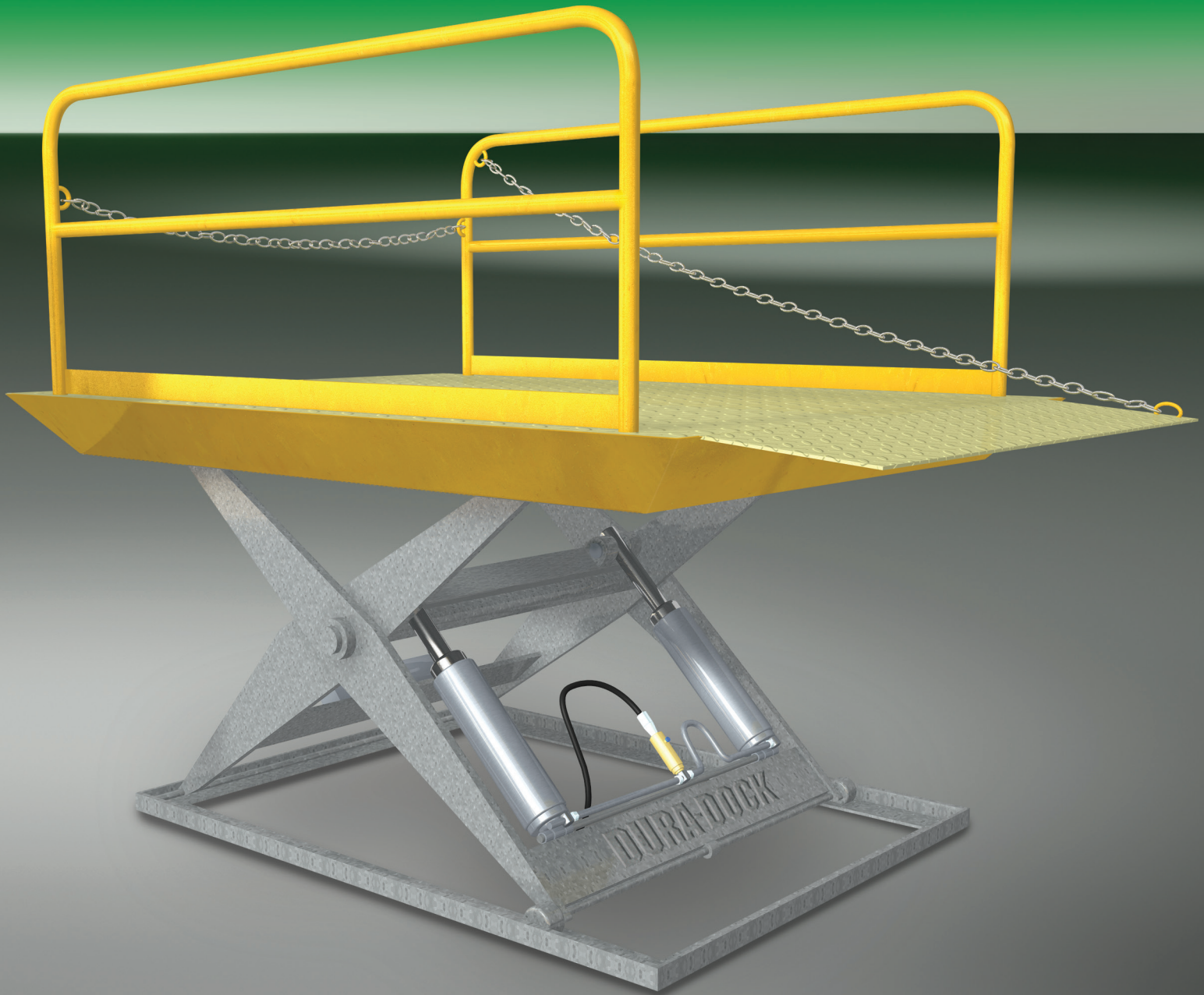


# **LOADING DOCK LIFTS**



844 220 0086

**SOUTHWORTH**

## Transfer Loads from Any Truck Bed Height to Any Loading Dock Height... Even Ground Level!



**M - Series** dock lift featuring Dura-Dock™ weatherproof construction.

### The Advantages of a Southworth Dock Lift

Dock lifts are more versatile than dock levelers, faster than manual loading and unloading, safer than ramps and inclines and less expensive than recessed truck wells. That's why every building should have a Southworth Dock Lift.

### A Model for Every Application

Southworth offers seven standard dock lift models with capacities from 5,000 to 20,000 lbs., platform sizes up to 8' x 12' and a variety of installation configurations to accommodate any loading dock requirement. Models featuring an "M" designation are built for use with two wheel dollies, hand carts, and hand pallet trucks. "H" model designations can be used with powered devices like powered pallet trucks, counterbalanced stackers and fork lift trucks.



**H - Series** dock lift for heavy loads (over 10,000 lbs.) and/or forklift accessibility.

### The Fast, Safe, Easy Way to Service Any Truck

With nearly 5' of travel range, dock lifts can service any type of truck from vans and pickups to tractor trailers and container trucks. Loads on dock lifts are always kept level making transport safer and easier than traveling up or down inclines created by dock levelers or ramps.







## Rugged Weatherproof Construction

All Southworth Dock Lifts are manufactured with structurally reinforced heavy steel plate platforms to minimize deflection. Wide base design provides increased rigidity to create the industry's most stable dock lift. **Model DL5-59 and DL6-59 DURA-DOCK™ dock lifts feature corrosion resistant galvanized base and legs as standard**, resulting in longer trouble-free service even in hostile environments.



**Galvanized Base and Legs are Standard on DL5-59 and DL6-59 Dura-Dock Models**

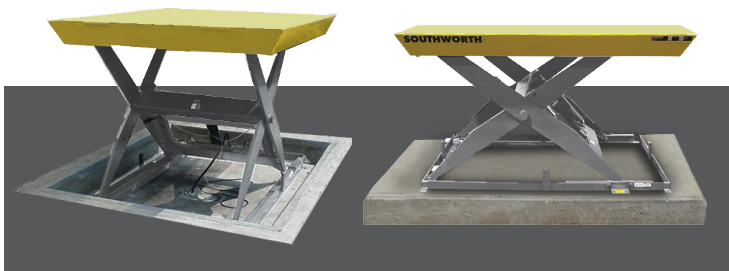
## Installation Package

To make the installation process as easy as possible, Southworth Dock Lifts ship fully assembled and include: 20' of coil cord on a push-button pendant control, and power unit reservoir filled with hydraulic oil.



## Pit or Top of Ground Mounting

Southworth Dock Lifts can be recessed in a pit for ground level lowering or surface mounted on a concrete pad (requires optional ramp for grade level access).



## Features and Options

### Mechanical Features

- Bevel toe guard platform
- Diamond tread deck for improved traction
- Diamond tread hinged throw-over plate with lifting chain
- Removable steel handrails with mid-rail, 4" side kick plate and safety chain
- Maintenance strut supports lift for servicing
- Removable lifting eyes for ease of installation
- Conforms to ANSI MH29.1 Standards

### Electrical/Hydraulic Features

- Pre-wired power unit and control panel
- Weatherproof NEMA 4 push-button control pendant with 20' coil cord
- Oversized, low pressure hydraulic cylinders
- Heavy-Duty hoses with burst strength 4x greater than operating pressure
- Flow control valve with adjustable lowering time
- Excess flow protection for controlled descent of lift in the unlikely event of a hydraulic line rupture
- Standard Voltages: 208/230/460V - 3 Phase

### Options and Accessories

- Grade level access ramp (for above ground lifts)
- Accordion skirting or roller shade
- NEMA 4 enclosures
- Environmentally friendly biodegradable hydraulic fluid
- Mechanical wheel chock to prevent fork truck from inadvertently rolling off lift while elevated
- Upper travel limit switch - mounted and wired
- Warning bell with flashing light
- Special paint finishes and custom colors
- Corrosion resistant coatings (standard on Dura-Dock models)
- Other bridge plate sizes available

# Specifications

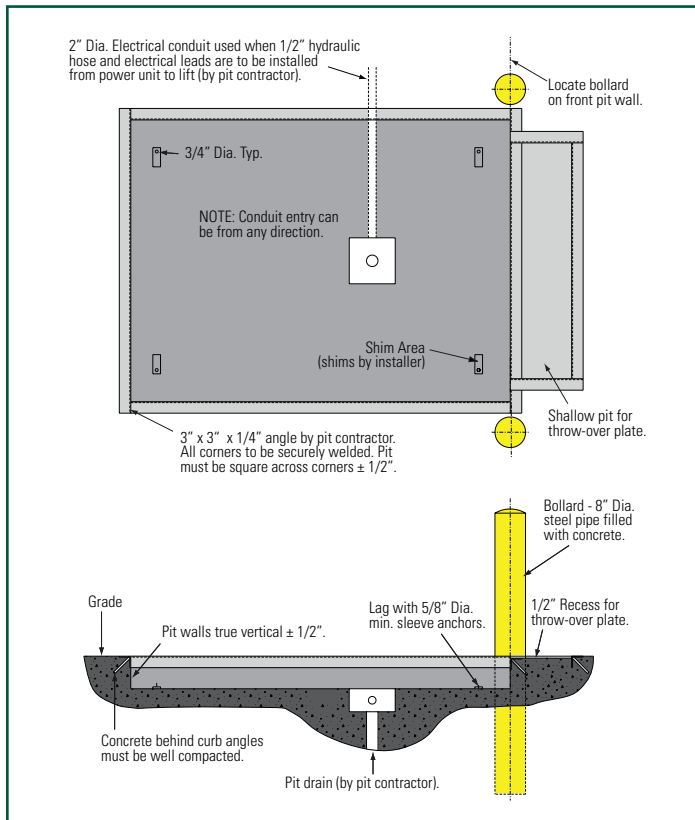
## M-Series - Medium-Duty Dock Lifts

| Model   | Lift Capacity | Roll-Over Capacity | Standard Platform | Maximum Platform | Vertical Travel | Low Height | Throw-Over Plate | Rise Time | Motor  | Approx. Weight |
|---|---------------|--------------------|-------------------|------------------|-----------------|------------|------------------|-----------|--------|----------------|
| DL 5-59M  | 5,000 lbs     | 10,000 lbs         | 6' x 8'           | 8' x 10'         | 59"             | 8"         | 18" x 60"        | 27 sec.   | 3.2 HP | 2,800 lbs      |
| DL 6-59M  | 6,000 lbs     | 10,000 lbs         | 6' x 8'           | 8' x 10'         | 59"             | 8"         | 18" x 60"        | 27 sec.   | 3.2 HP | 2,900 lbs      |
| Model DL5-59M and DL6-59M Dock Lifts feature Southworth's exclusive DURADOCK™ galvanized base and legs construction |               |                    |                   |                  |                 |            |                  |           |        |                |
| DL 8-59M  | 8,000 lbs     | 10,000 lbs         | 6' x 8'           | 8' x 10'         | 59"             | 10"        | 18" x 60"        | 42 sec.   | 3.2 HP | 3,200 lbs      |

## H-Series - Heavy-Duty Dock Lifts

|           |            |            |          |          |     |     |           |         |      |           |
|-----------|------------|------------|----------|----------|-----|-----|-----------|---------|------|-----------|
| DL 10-59H | 10,000 lbs | 10,000 lbs | 6' x 10' | 8' x 12' | 59" | 16" | 18" x 60" | 34 sec. | 5 HP | 5,000 lbs |
| DL 12-59H | 12,000 lbs | 12,000 lbs | 6' x 10' | 8' x 12' | 59" | 16" | 18" x 60" | 36 sec. | 5 HP | 5,200 lbs |
| DL 16-59H | 16,000 lbs | 16,000 lbs | 6' x 10' | 8' x 12' | 59" | 16" | 18" x 60" | 50 sec. | 5 HP | 5,500 lbs |
| DL 20-59H | 20,000 lbs | 20,000 lbs | 6' x 11' | 8' x 12' | 59" | 22" | 18" x 60" | 60 sec. | 5 HP | 7,900 lbs |

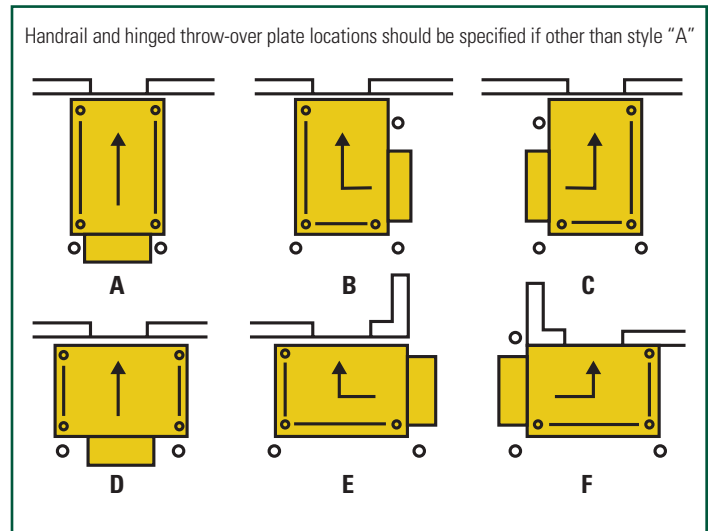
## Typical Pit Plan



## Manufacturer's Warranty

All Southworth Dock Lifts carry a full two year warranty on parts and labor. 10 year structural.

## Transfer Arrangements



## Furnished by Southworth

- Pit plans are forwarded upon receipt of order
- Installation and service manual forwarded with dock lift

## Work to be done by Owner's Contractor

- Unloading equipment at time of delivery
- All electrical work including wall disconnect switch
- Concrete work, building modifications and excavation
- Underground piping, conduit, angle framing to pit, embedded items, shims, lag bolts, and sump drain
- Supply hydraulic connecting hose or pipe from power unit to pit sump (see Southworth Pit Plan for details)



# SOUTHWORTH

Distributed by: Thomas Conveyor & Equipment • 1S450 Summit Ave #175 • Oakbrook Terrace IL 60181

(844) 220 0086 • www.tceconveyors.com • conveyors@tceconveyors.com