

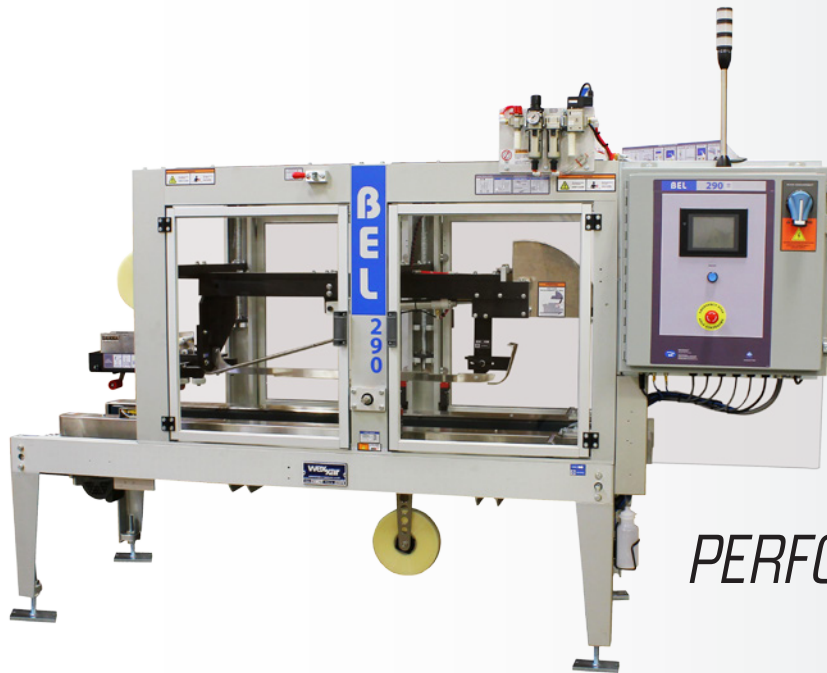


Distributed by



BEL 290T

AUTOMATIC TOP & BOTTOM TAPE CASE SEALER



PERFORMANCE DELIVERED

The BEL 290 is a rugged, heavy-duty case sealer designed for around the clock high speed applications.

The BEL 290 features the exclusive Uni-Drive System which powers both side belts with a single motor to keep the belts in sync, consistently providing a square seal even after prolonged use. This simple and rugged design will deliver years of reliable and low maintenance performance.

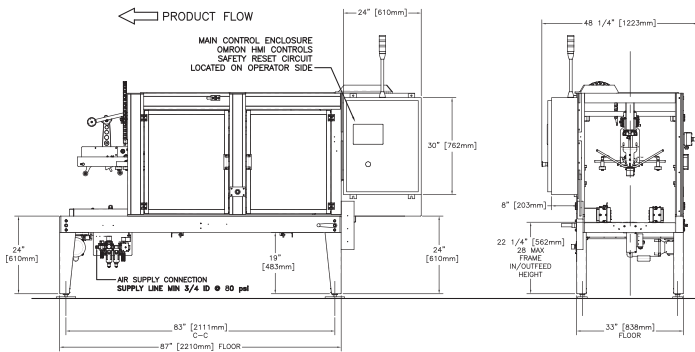
The BEL290 is also equipped with a Power Save Mode to minimize energy waste during slow or paused case production upstream. With an extruded frame construction, color HMI and small footprint, this case sealer will be efficient and effective in all sorts of applications and conditions.

STANDARD FEATURES

- » Exclusive Uni-Drive squaring technology that provide consistent and uniform seal on cases
- » Advanced fully interlocked guard doors allow easy access during set-up and maintenance
- » User-friendly touch screen to control and monitor the machine
- » Constructed with high quality components allowing for minimal levels of maintenance and operation in the most demanding working environments
- » Quick and easy size changeover in under 5 minutes

For more information, visit www.TCEconveyors.com

MACHINE SPECIFICATIONS



- » Machine Weight: 1250 lbs
- » Machine Dimensions: 107”(L) x 42”(W) x 87”(H)
- » Air: 0.07 cubic feet per cycle at 90 p.s.i.
- » Electrical: 120 Volts, 1 PH, 60 Hz - 10 amp draw
- » Speed: up to 50 cases per minute

OPTIONAL MODIFICATIONS

- » Modifications for undersized or oversized cases
- » Enviroguard water resistant options available
- » Gap Flap or other case style modifications
- » Custom Voltages

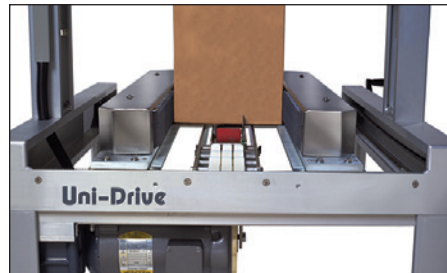
OPTIONAL ACCESSORIES

- » Auto-Adjust Package
- » Machine Management with tri-light beacon for case jam and tape monitoring
- » Locking Casters
- » Digital Dial Indicators
- » External/Internal Stop Gate



Power Saver Mode

Reacts to changes in case production and manages energy consumption by stopping the machine when it is not in use and restarts when case flow resumes.



Reliable and Repeatable Performance

Wexxar/Bel's exclusive Uni-Drive System synchronizes both side belts, eliminating case skew, ensuring a square seal even after extended periods of use.



On Machine Instructions

User-friendly pictorial guides and color coded labelling for convenient operation and size changes.

COMPLETE SOLUTION



WF30 Fully Automatic Case Erector

Fully automatic tape or hotmelt high speed case erector with Wexxar/Bel's patented pin and dome technology for reliable and consistent case forming.



WF30 S-Series Enhanced Speed

The Enhanced Speed Package on the WF30 allows for a 30% speed boost on Wexxar/BEL's ultra-reliable case erector.



WF30 S-Series Surge Control

Surge Control allows the WF30 Case Erector to adapt to the rest of the production line by speeding up or slowing down based on upstream demand.

CASE SIZE RANGE

	Length	Width	Height
Minimum	8" 203 mm	5 1/4" 133 mm	5" 127 mm
Maximum	32" 812 mm	17 1/2" 444 mm	19" 483 mm
Infeed/Outfeed Height (with adjustable foot pads) <i>Note: Castors add 4" to minimum and maximum height</i>			
Minimum	23" (584mm)		
Maximum	28" (711mm)		
Machine Speed: Up to 50 cases per minute depending on box size.*			

Specifications are subject to change without notice.

*NOTE: maximum speed is affected by case length, for specific capabilities consult with Sales.



1S450 Summit Avenue, Suite 175
Oakbrook Terrace IL 60181
Ph. 844 220 0086
www.tceconveyors.com
conveyors@tceconveyors.com